



THE FORUM

THE NEWSLETTER OF THE INSTITUTE OF CLASSICAL ARCHITECTURE & CLASSICAL AMERICA

FALL 2009

“ROME IS OURS BY RIGHT OF ADMIRATION” ~ AN INTERVIEW WITH JEFFREY DAVIS
BOOKISH PURSUITS ~ THE 2009 ARTHUR ROSS AWARDS ~ CALENDAR OF EVENTS



“Rome is ours by right of admiration”

SO WROTE THE PIONEERING 19TH-CENTURY Swiss cultural historian Jakob Burkhardt, whose study of the Renaissance focused a lifelong devotion to the panoply of Italian creative achievement and its inspiring record as a contemporary resource. Our impulse was similar last June, when academic coordinator Leah Aron led a group of 23 Institute members on an intensive week-long drawing tour. It was our first Rome trip in several years and signals a determination to restore such essential training as an annual offering. The trio of instructors — again in the spirit of Burkhardt’s diverse interdisciplinary appreciation — were artist, Michael Grimaldi; architect and planner, Michael Mesko; and historian, John Varriano. There is an illustrated blog posting on the Web site about the program, as well as one about William Bates, who provides the Edward Vason Jones Rome scholarship prize. I feel particular joy in reporting this fine endeavor perfectly fulfilling our mission as it does.

This fall marks the publication of three important new volumes in our “Classical America Series in Art and Architecture.” Long in gestation, together they reveal the Series’ commitment to sustaining the classical tradition through books both new and old. Books in the Series include textbooks, plan books, theory, and insightful history. While there are at any given moment several in consideration or active preparation, it is rare to celebrate the concurrent print advent of so much scholarship. Membership support allows it along with occasional grants; it is an essential part of what we do since first launched by Classical America in the late 1960s.

Institute Fellow and Publication Committee stalwart Seth Weine says it best, “A political activist once spoke of creating power tools for democracy. Similarly, what we seek with the ICA&CA series of books is to create powerful tools for bettering the skills and sharpening the eyes of designers and planners and artists.”

In order of upcoming availability they are: 1) *Edwin Howland Blasfield: Master American Muralist* (W.W. Norton & Co, edited by Mina Rieur Weiner); 2) *The Future of the Past: A Conservation Ethic for Architecture, Urbanism and Historic Preservation* (W.W. Norton & Co. by Steven W. Semes — another Fellow and now an associate professor at Notre Dame’s School of Architecture directing

its Rome study program); and 3) *Letarouilly: Le Vatican and La Basilique de Saint Pierre* (Princeton Architectural Press as part of its distinguished Classic Reprint Series with a new introduction by Ingrid Rowland). For *Le Vatican*, Richard Cameron allowed his historic edition of the Letarouilly to be unbound and digitized for which we are grateful, and our thanks in turn to generous support from the University of Notre Dame and the Arthur Ross Foundation.

Programs and coursework will address their diverse yet complementary content over the months ahead. I am especially glad to report that the Blasfield volume — our first book devoted to the career of a single artist — is already slated for programs in New York, Cleveland, and Philadelphia. These are all places boasting fine Blasfield murals still in their original architectural settings. Besides two tours, the New York launch event will feature a panel discussion with all of the contributing essayists, as well as the photographer, Anne Day, who traveled far and wide and literally scaled the walls to forge this overdue record of art and architecture in classical equipoise.

Learn more about these and other publications at the online bookstore at www.classicst.org. Recall that a small share of all purchases that arrive at Amazon via that portal comes back to us as a contribution.

Proposed new titles are welcome always and should come here to the attention of Brian Connolly, who so ably chairs the committee responsible. I am pleased that our fine intern, Ivan Gilkes, has been working hard over recent weeks adding new titles to the bookstore extending beyond the Series’ titles themselves, including, but not limited to, all work published by members of the board, faculty, and Council of Advisors.

Please understand the depth of our appreciation of your role in maintaining the Series even in such uncertain times.



Paul Gunther
President



2009 Rome Drawing Tour student Leslie-jon Vickory sketching at Piazza del Campidoglio. Photograph by Leah Aron.

ICA&CA Interview With Jeffrey Davis

IN 1992, WHEN THE ICA held its first summer program at the New York Academy of Art, a young column manufacturer was one of the students. Several years later, Jeffrey Davis, founder and president of Chadsworth's 1-800-Columns, became a member of the Institute's first board of directors along with Clem Labine, who was profiled in the 2009 Spring/Summer issue of *The Forum*. They served together on the ICA&CA board as the organization was in its grassroots beginnings so we knew they would have a unique perspective on both the building industry and the ICA&CA today.

CL: A lot of us think of you as "Mr. Columns." How did you get into the column business in the first place?

JD: Initially, I dreamed of being in politics. I had a solid liberal arts education with a focus on political science. But I found the game of politics disillusioning. So I moved on to the corporate world with the goal to create and build a successful company in the column market.

CL: Where does the name "Chadsworth" come from?

JD: I was impressed by the beautiful English estate, Chatsworth. The name evoked the sense of quality I wanted, but I replaced the "t" with a "d" to stand for my last name.

CL: As I recall, you were a student at one of the early ICA summer programs. What was it like?

JD: I was a student in the very first (1992) ICA six week-long summer program. The instructors included Richard Cameron, Richard Sammons, and Don Rattner. I had been running Chadsworth's for several years by then. The program taught me so much about the language of classical architecture, but I also learned that classical design isn't just one simple, set formula. I remember, too, all the fun times we had in the blistering heat of a New York summer: Our classroom wasn't air conditioned!



JEFFREY DAVIS ON THE PORCH AT CHADSWORTH COTTAGE WITH CHAD (THE BLONDE) AND RICKY — TWO OF HIS THREE DOGS.

CL: Did that ICA program have much impact on your business?

JD: The impact was substantial. I'd learned at the ICA that what was on the market at the time was not classical at all. In order to save money, manufacturers commonly reduced the height and projection of the plinth and base, so when we developed the first mass-produced FRP columns I didn't just replicate the typical wood stock column. I explained to my production people that with FRP it should cost no more to make a classically correct column. I made a pattern of a classical Tuscan column and this was the beginning of our PolyStone® columns for which, in 2000, Chadsworth's won an industry award for best new product.

CL: So you were really the pioneer of architecturally correct FRP columns?

JD: Yes! And in addition to the base moldings, we worked on getting the astragal correctly proportioned, well defined, and with the apophyge curving from the shaft to the fillet. Some companies produced columns with astragals so ill-proportioned that they projected like flying saucers; others made astragals with no clear definition of the molding shapes. I take a lot of pride in having pushed the stock column industry into better design.

CL: Over the past 10 years have you seen any change in your average customer's level of sophistication about classical detailing?

JD: When it comes to the average consumer, no. I still spend much of my time educating first-time buyers on proportion, design, and proper use. But I enjoy that part of my job the most. Design professionals, however, are more knowledgeable than they used to be due to the growth of the classical movement.

CL: What is the most challenging aspect of the column business today?

JD: My biggest frustration is when architects specify our columns, but the local lumberyard supplies a cheaper product without anyone realizing it until it is too late and the architect ends up disappointed. So we've been developing ways to make it easier for architects to get what they specify. For example, in addition to manufacturing and distributing our own columns, we've added other major column suppliers such as Hartman Sanders, Crown, Dixie Pacific, and HB&G.

CL: Has the internet helped you?

JD: We've been adding detailed specification and educational information online, which we hope makes the design and spec process easier. In developing our online store, we've also added complementary products such as Focal Point moldings, Life-Time Millwork, and Atlantic Shutters. Of course, price is a challenge. I've wanted to develop a low-price guarantee, but lumberyards will almost always find out our price and then undercut it.

CL: I'm curious: What are the biggest columns Chadsworth's has ever supplied?

JD: Believe it or not, for a project in Kuwait, we furnished wood columns that were 30 feet high and 48 inches in diameter.

CL: Are there things about classical columns that you're still learning today?

JD: I continue to be astonished by the variety within classical architecture. On a recent trip to Rome I spent time sketching and measuring different column bases and capitals, amazed as ever by the inventiveness of classical architects through the ages. I'm always working to improve stock columns, such as the way the shaft and base join.

CL: Some years ago, you relocated your business and residence from Atlanta to North Carolina. What inspired the move?

JD: When we were in Atlanta, I also had an accounting office in Goldsboro, North Carolina. My parents were running that office, but I spent a lot of time traveling between the two cities. Moreover, my staff was at a point where they wanted to raise families — and I wanted to be closer to my parents. So I asked everyone in the company to look at different cities and list their top three. In the end, we chose Wilmington, North Carolina, for its quality of life. My staff has enjoyed it, and I've been able to care for my parents and raise my two nephews through their teenage years.

CL: I understand you recently built a home on Figure Eight Island off the North Carolina coast.

JD: My original thought was just a simple poured-concrete box. But, of course, things soon got more complicated. Building on a barrier island isn't easy! With a local engineer, I drew up a rough design for a 40-foot cubic house with four columns on the ocean side. I chose to put architectural emphasis on the water side because I had a vision of boats on the Intracoastal Waterway gazing at this villa rising from the sand.

CL: Wasn't fellow board member Christine Franck involved with the project?

JD: When I realized I wanted a classical villa, I knew the details would be critical and that I'd need a skilled classical designer like Christine. Christine and I looked at a lot of Federal and Greek Revival homes for inspiration. But in the



LEFT: THE 20-FOOT DORIC COLUMNS AND TEMPLE FRONT ON JEFFREY'S CHADSWORTH COTTAGE HOME MAKE IT A MEMORABLE LANDMARK FOR BOATS TRAVELING ALONG THE INTRACOASTAL WATERWAY. RIGHT: ONE OF JEFFREY'S FAVORITE FEATURES IN CHADSWORTH COTTAGE IS THE TOWER OF THE WINDS MANTEL — A CUSTOM DESIGN BY CHRISTINE G. H. FRANCK. Photography courtesy of Chadsworth's, Inc.; Residential Design and Decoration by Christine G. H. Franck, Inc.

end, what made the most sense was a type of Palladian villa with a Roman temple front and high base. The high base was dictated by the local building code, which specifies that waterfront homes must have a raised first floor with breakaway construction below.

CL: Is this a year-round residence?

JD: I did not expect it to be — I enjoy traveling and I also have homes in Atlanta on Lake Lanier and in the mountains, as well as a small *maison de poupée* in France — but Chadsworth Cottage turned out to be home-base year-round.

CL: What do you like best about living in Chadsworth Cottage?

JD: I have complete privacy, yet the house never feels overwhelming. The room layout allows me to feel connected to the entire house even when home alone. My favorite features of the house are probably the Tower of the Winds mantel Christine designed for me and the various secret doors and hidden storage. Quite honestly, the house succeeds beyond my expectations! From the time I wake up to the time I go to bed, it is a beautiful, peaceful place to be. Christine visits often, as do family and friends. The house is usually full of folks, as well as my three dogs!

CL: Living on a barrier island as you do, have you had any scares from hurricanes?

JD: Hurricanes and nor'easters are part of living on the Carolina coast. I rode out Ophelia in the cottage and it was remarkable. We deliberately over-engineered the structure of the house so even with gale winds blowing, from inside the house you couldn't tell there was a hurricane. Aside from that major precaution, before every storm we just close the shutters and move furniture inside.



CL: You've been involved with the Institute since the beginning. What changes have you seen?

JD: We've grown from an all-volunteer operation to having a dedicated board and a loyal and hard-working staff. Programs have expanded from that one six-week program to the broad range of national programs we have today. Even with all of those changes, though, one thing that hasn't changed is the valuable friendships that I and others continue to make through the Institute.

CL: As one of its earliest board members, has the Institute lived up to your expectations?

JD: The Institute has exceeded anything I dreamed it would be. I certainly hope it continues to expand its role in promoting the ideals of classicism and teaching the principles of classical design. I hope its mission continues to improve the quality of architecture throughout the industry — from design, to manufacturing, to construction.

CL: You are active in many non-profit and charitable organizations besides the ICA&CA. Is there one that's particularly close to your heart?

JD: Closest to my heart is Meals on Wheels. I've been involved since I lived in Atlanta. I've also been on the board of the International Network of Traditional Building, Architecture, and Urbanism (INTBAU), the brainchild of architect Bob Adam. Through INTBAU, I have been gratified to see ICA&CA's work in the United States expand worldwide.

— Clem Labine

Bookish Pursuits

THE ICA&CA IS PROUD TO announce that cataloging the invaluable architecture and arts library has finally begun. The collection, which numbers over 2,000 titles, has been thoughtfully compiled over the years by the Institute's Board, Fellows, and staff. Notable and extensive donors include ICA&CA Fellow, Seth Joseph Weine; trustees, Peter Pennoyer and Gilbert P. Schafer III; Dover founder, Blanche Cirker; and the late artist, Taylor Harbeson, among others. These literary and instructional gifts have greatly enhanced the Institute's teaching resources, which are integral to promoting the classical tradition in architecture and the allied arts.

Seth Joseph Weine says, "The library is essential. Look at photos of architects from our greatest period of building, the American Renaissance. They're often depicted in the office library — who could forget that image of berobed H. H. Richardson, book in hand! Visually rich volumes that hold images, lessons, and precedents are the necessary nutrients of traditional designers. Besides, I've never met an architect who wasn't a bibliomaniac anyway — having books as part of the ICA&CA setting is a very natural thing."

To date, the library has been primarily utilized by the faculty; once it is fully cataloged, it will be made available to the membership as a reference library. The collection, which will be cataloged according to Library of Congress classifications, is being entered into a Resource-Mate database, specifically designed for cataloging and maintaining small libraries. Although there has always been a library at the ICA&CA, this summer marks a thorough attempt at improving its organization and accessibility. Thanks to Richard D'Attili for his volunteer assistance and advice as we embarked on this long-overdue project.

The Institute's other literary pursuits include the on-line Classicist BookShop, which has been updated over the summer, thanks to our capable intern Ivan Gilkes. The on-line Classicist BookShop has long been an integral part of our Web

site in the hope that it would serve as a unique and vetted collection of books on classicism. ICA&CA Publications Committee Chair, Brian Connolly, remarks, "With the diminishing number of retail bookstores, casual browsers no longer have the easy opportunity to discover many inspiring volumes that showcase the classical tradition. The ICA&CA's on-line Classicist BookShop offers an alternative forum to present volumes on the disciplines that constitute classicism today. Its goal is to become the best

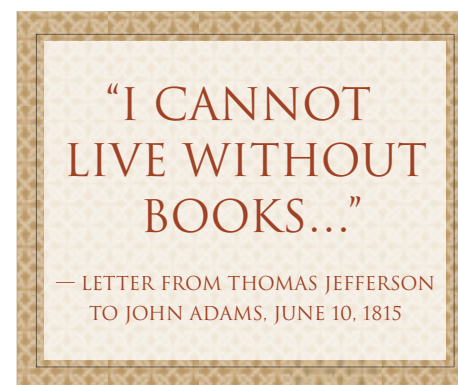
single-source reference for in-print books on this subject." The Publication Committee is responsible for selecting the titles that appear in the bookshop; Connolly describes the process, "Our broad list features volumes geared towards people as diverse as the budding classicist seeking to be inspired by pictorial volumes or

biographical material, to the academic or the practitioner in need of historical treatises, exemplars and "how-to" instruction manuals. The current list is dominated by architectural books, but the Publications Committee is actively working to expand the sections devoted to painting, sculpture, landscaping, interior design, and the allied arts."

Currently, The Classicist BookShop allows readers to review new releases, the full roster of titles in the "Classical America Series in Art and Architecture," and a recommended reading list. To facilitate the awareness and accessibility of these indispensable titles, the ICA&CA has partnered with Amazon.com. The Amazon.com link from The Classicist BookShop allows for a portion of proceeds from all sales made on-line to benefit the Institute.

If you are interested in supporting the ICA&CA library initiative, please consider donating to the Annual Fund. Your participation will make a difference and will maintain and grow the library. Visit www.classicist.org for more information on donating to the Annual Fund for the library, and visit the on-line bookshop at www.classicist.org/publications-and-bookshop.

— Jess Ouwerkerk



Grand Central Academy News

THE GCA SECOND ANNUAL SCULPTURE COMPETITION: REVIVING THE CLASSICAL FORM

During the second week of June, 12 talented sculptors worked 40 hours over five days to compete in the Grand Central Academy's (GCA) Second Annual Figure Sculpture Competition, held in the GCA Sculpture Studio in New York City. Selected from an applicant pool of 46 candidates from around the world, ranging in age from 21 to 64, the finalists used water-based clay and intense focus to create a half-size (32"), full-figure sculpture from a live model.

As finalist Mason Sullivan described the experience: "The competition is like a 200-meter freestyle race; one that lasts for five days." Despite the demanding schedule, Virgil Oertle, another finalist, commented that the competition was "the best one" he has competed in and that all others "pale in comparison."

The final sculptures were judged by a panel including Jacob Collins (GCA Director, ICA&CA trustee, and professional NYC artist), Richard Cameron (ICA&CA co-founder and trustee, founder of Ariel Atelier), and Stuart Feldman (professional sculptor, former Pennsylvania Academy professor, and co-founder of the Schuylkill Academy of Fine Art in Philadelphia).

The criteria used to evaluate the sculptures was outlined as the following: *The final pieces are judged on the basis of their success as classical sculptures in the great tradition of works that have come down to us from the ancient Athenians and Romans, the Italian Renaissance, and through to the Beaux Arts-trained masters of the nineteenth century. Mastery of the human figure will be of paramount importance. Judging criteria will be clarity of form, simplicity of action, balance, and dynamism. Proportions and forms of the figure should be classical in spirit. The sculptures should be anatomically accurate and structurally clear. With respect given to time constraints, naturalism of the modeling and refinement of finish will be considered. Beyond these factors, the interior life, the rhythm, and poetry of the work will also be highly prized.*

After a thorough and lengthy evaluation process, the judges announced the winners at a public event held at the GCA on the evening of Friday, June 12. The First Place prize of \$10,000 was awarded to Joshua Koffman, a Philadelphia-based artist and teacher at the Pennsylvania Academy of Fine Art, and co-founder of a

collaborative workspace and art center (the Traction Company) in Philadelphia. Second Place (\$3,000) went to Kate Brockman, an artist and teacher in Philadelphia and previous second place recipient from GCA's 2008 Sculpture Competition. Third Place (\$2,000) went to Jiwoong Cheh, a New York Academy graduate, founder of a figurative drawing and sculpture institute in Korea, head sculptor at StudioEIS, and part-time teacher at GCA. Honorable mentions were extended to Julia Levitina McGeehan, a professional sculptor, mold-maker, and bronze caster from Philadelphia, and Angela Cunningham, a former art teacher in California and current GCA student.

Juror Richard Cameron said, "This second competition was an unqualified success and I was pleased to serve as a judge. Josh Koffman's work emerged ultimately and unanimously as the most coherent whole of style, form, and expression." Reflecting on his participation in the GCA Sculpture Competition, Koffman said of the event, "Participating in this year's competition was a tremendous experience. The GCA, known for its remarkable student work, set a bar of excellence for every one of the finalists. Being chosen as first place winner among so many talented and dedicated sculptors is truly an honor. The competition demanded a clear understanding of values and process, and I entered as a means to challenge my own knowledge of both. I am grateful for the GCA's support of the sculpture community and pleased to see its methodical dedication to building a sculpture department within the curriculum."

The GCA Figure Sculpture Competition was launched in June 2008 to contribute to the growing interest in classical figurative sculpture and in classical art in general. The goal of the competition is as much about bringing together a group of talented individuals for dialogue and public review of their creations as it is about awarding prizes. Paul Gunther, ICA&CA President, describes the competition and the GCA program: "The physical and psychological rigor of the competition takes its cue from the Beaux Arts model as an annual complement to the regular class schedule [of the GCA]. It signifies a growing community of students and practitioners who seek an alternative to the more solipsistic



First place winner of the 2009 GCA Sculpture Competition, Joshua Koffman. Photograph by Brian Houlihan.

basis of most of today's schools of art. One path to such an alternative is the slow and exacting development of technical skill nurtured above all by a lifelong examination of the human body as a centering point of creative departure. The competition thus serves as an eventful metaphor for all we endeavor to impart as stewards of the classical course throughout history."

The Grand Central Academy and the Figure Sculpture Competition are made possible with the generous support of the Morris and Alma Schapiro Fund. Next year's competition will similarly take place in the beginning of June, with applications due by April 1, 2010. For more information contact Lauren Salm, gcasculpturecompetition@gmail.com, or visit the GCA Web site www.grandcentralacademy.classicist.org.

—Lauren Salm

MEET THE GCA BLOGGER

Last fall, first-year core student Emilie Lee agreed to take over the GCA blog. Since then, on breaks from her cast drawing, she has roamed the studios with her camera and her dog Lucy, taking photographs of student art and classes-in-progress. She blogs about what students are learning in drawing, painting, sculpture, ecorche, color theory, and architectural drawing classes. She regularly posts student works-in-progress as well as teacher demonstrations pictured step-by-step. Emilie also features recent works by teachers and posts notices of their upcoming shows and press. Finally, she keeps on top of upcoming public lectures at the GCA and ICA&CA, and basically anything of interest to serious students of classical realist art. Over the summer, during the month of July, Emilie was a Hudson River Fellow and posted daily from the Catskills.

The blog has caught the attention of art students around the world as evidenced this year by students from Hong Kong to Brunei to Germany registering for GCA workshops. Thanks Emilie! To follow the GCA blog and what catches Emilie's eye, visit grandcentralacademy.blogspot.com.

FACULTY NEWS: EXHIBITIONS & PRESS

JACOB COLLINS

Solo exhibition at John Pence Gallery, San Francisco, CA, May 2 – 30, 2009; Solo landscape exhibition at Meredith Long & Co., Houston, TX, November 2009; Group show, "A Figural Presence," at the Alva deMars Megan Chapel Art Center, Saint Anselm College, Manchester, NH, September 25 – November 25, 2009 (This exhibition made possible in part by a grant from the NEA).

RECENT PRESS

"Jacob Collins: A California Return," *American Art Collector*, issue 43 (May 2009).

Robinson, Charles, "Notes from Brush Hill: Jacob Collins" *ASMA News and Journal of the American Society of Marine Artists*, April 2009: cover (photo).

Malafrente, Allison. "The Grand Central Academy of Art: A Collective Vision for a Classical Revival" *Drawing Magazine*, Spring 2009.

Simmons, Jenni, "Mere Beauty," *The Curator*, May 8, 2009 (www.curatormagazine.com/jennisimmons/mere-beauty).

Collins, Jacob, "Foreword," *Drawing Lessons from the Great Masters: 45th Anniversary Edition*, New York: Watson-Guptill Publications, May 2009.

EDWARD MINOFF

Recent solo exhibition at Cavalier Galleries, Greenwich, CT, May 14 – 28, 2009; "Edward Minoff: Waves," *American Art Collector*, issue 43 (May 2009); "Creating Large-Scale Studio Landscapes," by Edward Minoff, *American Artist*, July/August 2009.

TONY CURANAJ

Solo exhibition at John Pence Gallery, San Francisco, CA, September 11 – October 10, 2009.

TRAVIS SCHLAHT

Solo exhibition at John Pence Gallery, San Francisco, CA, October 16 – November 14, 2009.

JOHN MORRA

Solo show at Hirschl & Adler Gallery, NY, NY, April 23 – May 22, 2009.

JON DEMARTIN

"Drawing Fundamentals: The Sphere," by Jon deMartin, *Drawing Magazine*, spring 2009.

JIWOONG CHEH

Awarded the Leonard Meiselman Award from the National Sculpture Society's 76th Annual Exhibition; Awarded Third Place in GCA's 2nd Annual Classical Figure Sculpture Competition, June 8 – 12, 2009.

THE GCA WELCOMES NEW STUDENTS IN SEPTEMBER:

Challen Berg, (Jacksonville, FL)
Todd Casey, (Lowell, MA)
Devin Cecil-Wishing, (San Francisco, CA)
Zurab Chertkoshvili, (Brooklyn, NY)
Lindsay Foster, (Killeen, TX)
Valentina Gallup, (New York, NY)
Charlie Harris, (Zanesville, OH)
Greg Harris, (Milford, PA)
Samel Hung, (New York, NY)
Rodrigo Mateo, (New York, NY)
DC Morale, (New York, NY)
Irvin Rodriguez, (Bronx, NY)
Matt Weigle, (Harrisburg, PA)
Katie Whipple, (Avon, IN)

—Justine Kallb

Travel Programs

TOURS FILL UP QUICKLY and there is priority registration for ICA&CA members, Patron level and above. Tour operator, Classical Excursions, specializes in exclusive tours that emphasize the enduring excellence in architecture, art, music, gardens, and archeology. For further information, including pricing, please contact Lani Sternerup or Tom Hayes at contact@classicalexursions.com or (800) 390-5536; (413) 528-3359.



FROM LEFT TO RIGHT: ALTES MUSEUM BERLIN BY K. F. SCHINKEL; ARIEL VIEW OF PLAZA DE MAYO, BUENOS AIRES; THORVALDSEN MUSEUM IN COPENHAGEN; LAUGHLIN HOUSE, WASHINGTON, D.C.

2009 DESTINATIONS

SEPTEMBER 10 – 16

Berlin And Potsdam: From Rococo to Karl Friedrich Schinkel

SEPTEMBER 30 – OCTOBER 4

Private Hudson River Valley

DECEMBER 2 – 6

Private Washington, D.C.

2010 DESTINATIONS

APRIL 14 – 18

Southern Classicism in Lexington, Kentucky

MAY TBA

Private Buenos Aires: Paris on the Rio De La Plata

JUNE TBA

Classical Denmark: Copenhagen & Country Houses

SEPTEMBER TBA

Discovering Classical Portugal

OCTOBER TBA

Private Classical Baltimore

DECEMBER 1 – 5

Private New York

The ICA&CA is again pleased to work with Pamela Huntington, Exclusive Cultural Travel Programs, for two extraordinary tours: A special tour of Provence and one of Paris. For more information about these programs, contact Pamela Darling at pdarling@eventsofprestige.com or +33 1 45 67 62 81. Also please visit www.eventsofprestige.com.

EXCLUSIVE GALLO-ROMAN PROVENCE

MARCH 28 – APRIL 3, 2010

PRIVATE CLASSICAL PARIS DURING THE BIENALE DES ANTIQUAIRES

SEPTEMBER 12 – 19, 2010

TRAVEL DATES SUBJECT TO CHANGE; SOME TOURS MAY BE FILLED BY PRESS TIME

2009 ARTHUR ROSS AWARDS

ON MAY 4, 400 GUESTS GATHERED to honor the winners of the 2009 Arthur Ross Awards for Excellence in the Classical Tradition and to pay tribute to Arthur Ross, whose unceasing dedication to classicism made the first award possible in 1982. Once again, the event was held at McKim Mead & White's University Club of New York.

The lively group of architects, designers, developers, contractors, artists, patrons, and friends joined Arthur Ross' wife Janet, who served as the Honorary Chair for the evening along with ICA&CA trustee Peter Pennoyer and his wife Katie Ridder, who together served as dinner co-chairs.

Chosen from over 100 submissions, the winners were selected by a jury led by Peter Pennoyer, architect, author, and ICA&CA trustee; along with Anne Fairfax, architect and Chair of the ICA&CA; Marshall Allan, founder and managing partner of Somerset Partners and ICA&CA trustee; Chris Barrett, interior designer, KAA Design Group and former ICA&CA Southern California Chapter president; Rhett Butler, artisan and owner of E.R. Butler & Company; Michael G. Imber, architect, 2007 Arthur Ross Award recipient, and president of the ICA&CA Texas Chapter; Frances Schultz, journalist and author; Paul Whalen, architect and partner at Robert A. M. Stern Architects; and Lloyd Zuckerberg, developer and preservationist. The jury coordinator was Philip Dodd, ICA&CA Fellow, author and architect in the Connecticut firm of Wadia Associates.

The awards were made in five categories among the eleven which constitute the full awards spectrum:

ARCHITECTURE

JOHN MILNER ARCHITECTS, INC.

For the Design of Traditional Residences Respectful of Regional Materials and Scale and for Devotion to the Restoration and Adaptation of Historic Buildings and Sites

ARTISANSHIP

CHRIS PELLETTIERI

For His Commitment to Original Design and Skilled Craftsmanship In the Classical Tradition

HISTORY/PUBLISHING

LIBRARY OF AMERICAN LANDSCAPE HISTORY

For Artfully Fostering the Heritage of American Landscape Design and Influencing the Landscape Profession through Scholarship and Publications

LANDSCAPE ARCHITECTURE

PERRY GUILLOT

For the Elegant Creation of Masterful Landscapes and Gardens

PATRONAGE

DARYL & ROBERT DAVIS

For Inspiring a New Generation of Architects with their Enduring Vision at Seaside



CLOCKWISE FROM TOP LEFT: PERRY GUILLOT, KATIE RIDDER, AND PAUL GUNTHER; MARY DENADAI AND JOHN MILNER; ROBIN KARSON, ANNE FAIRFAX, PETER PENNOYER, AND MICHAEL JEFFCOAT; ROBERT AND DARYL DAVIS; ANNE FAIRFAX, CHRIS PELLETTIERI, AND PETER PENNOYER. Photography by Mia Matheson.

Proceeds of more than \$275,000 were raised to further the educational programs of the Institute. Thanks go to the evening's lead sponsor, Zeluck Windows and Doors, and special underwriters Bulgin & Associates, Inc., R. D. Rice Construction, and Uberto Construction. Thanks also to our loyal friends and supporters for making the event such a success. ICA&CA President, Paul Gunther, said, "I am especially grateful to all those who joined us this year to salute a deserving new roster of Ross laureates. A challenging economy combined paradoxically with an unprecedented nationwide demand for our educational offerings means that recognizing such unequivocal talent is more important to us than ever before."

Of Note

ART BOOK COLLECTION DONATED

In the early fall of 2006 when the **Grand Central Academy of Art** was expecting its first class of students, the ICA&CA received a wonderful gift, specifically for the art school. **Taylor Harbison**, an artist and member of the ICA&CA, passed away on March 30, 2006. His partner, **Danny Garza**, donated Taylor's art book collection, approximately 200 volumes, which have become the foundation of the GCA's Art Library. These books will finally be classified and included in the ICA&CA Library Database. See page 5 for more *Library News*.

HABITAT FOR HUMANITY COMPETITION AWARDS ANNOUNCED

In July 2009, the **Southern California Chapter of the ICA&CA** announced the winning designs of its inaugural **Affordable Housing Design Competition** at a reception at the new **Waterworks** in West Hollywood. The event benefitting Habitat for Humanity of Greater Los Angeles was attended by 200 guests. Twenty design

entries, which will be published by Habitat for Humanity, were on display. Congratulations to the following winners:

BEST OVERALL DESIGN

Cindy Grant Architecture, Inc. with Tierra Sol y Mar, Inc. and Brooke Gardner Interior Design

BEST CRAFTSMAN

William Hefner Architecture, Interiors and Landscape

BEST SPANISH COLONIAL

Cindy Grant Architecture, Inc. with Tierra Sol y Mar, Inc. and Brooke Gardner Interior Design

BEST MID-CENTURY MODERN

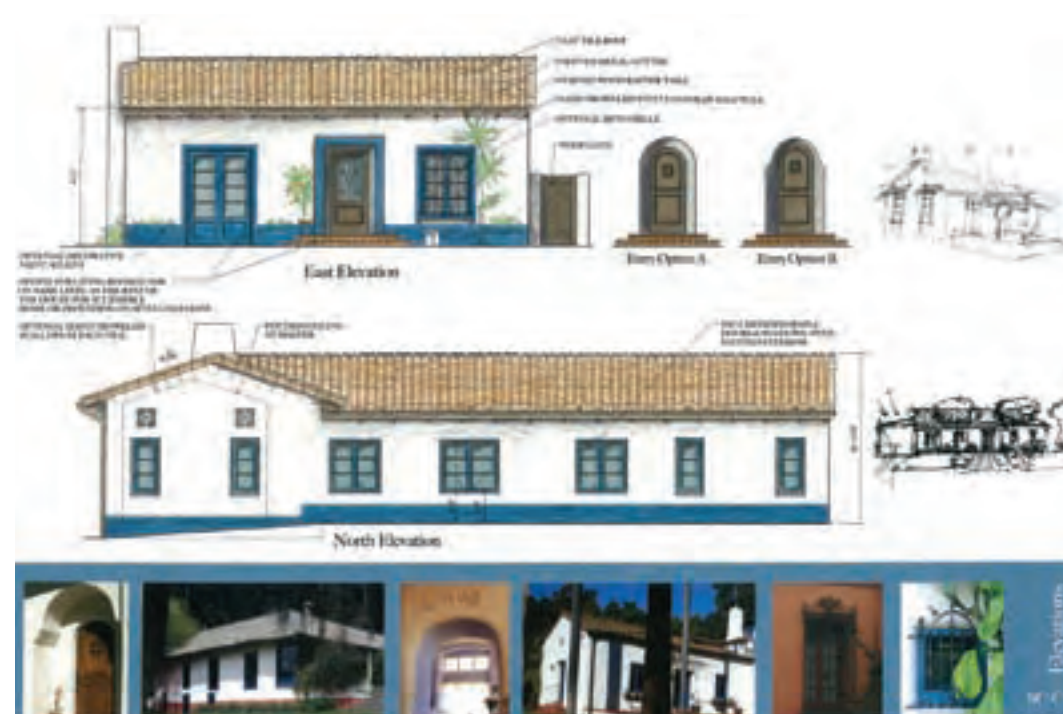
KAA Design Group, Inc. with Kaplan Gehring McCarroll Architectural Lighting

BEST CONTEMPORARY

William Hefner Architecture, Interiors and Landscape

BEST ENGLISH COLONIAL REVIVAL

Michael G. Imber, Architects



WINNING ENTRY FOR BEST OVERALL DESIGN IN HABITAT FOR HUMANITY COMPETITION BY CINDY GRANT ARCHITECTURE, INC. WITH TIERRA SOL Y MAR, INC., AND BROOKE GARDNER INTERIOR DESIGN.

MASTER OF SCIENCE IN ARCHITECTURE WITH CLASSICAL DESIGN EMPHASIS

AT GEORGIA TECH

The Georgia Tech Master of Science in Architecture with an emphasis in Classical Design (MSCD) marks its third year. Six students — Darius Stewart, Glenn Larimore, Cameron Bishop, Race Alexander, Ryan Moss, and Syl Bartos — are participating in advanced courses in a three-part studio for the fall term, which began August 17, 2009. Instructors include Harrison Design Fellow for the fall semester, **Jim Strickland**, founder of Historical Concepts. He is assisted by **Clayton Rokicki**, a member of Historical Concepts since graduating UND in 2006. Clayton is also president of the Young ICA of the ICA&CA Southeast Chapter. **Jonathon LaCrosse**, of Dixon Architect, is in his third year of teaching for the MSCD and will be joined by **Jeremy Sommer**, founder of Sommer Design Studios and a graduate of the first year of the MSCD. The second part of the fall semester will be a two-week intensive study at the ICA&CA New York headquarters with classes on the orders, proportion, India ink wash rendering, and walking tours. **Michael Mesko**, ICA&CA Fellow and instructor, has worked with **Betty Dowling**, Professor at Georgia Tech, to coordinate the classes and will also teach the spring studio of the MSCD in Atlanta, as the Harrison Design Associates Visiting Scholar in Classical Design.

ALVIN HOLM TO RECEIVE ANNUAL CLEM LABINE AWARD

For his advocacy of classicism at a time when it wasn't popular and for his life-long devotion to teaching, **Alvin Holm** has been named as the first-ever recipient of **Restore Media's annual Clem Labine Award**. The Award has been created to honor an individual for a consistent body of work that "fosters humane values in the built environment." This year's award will be presented on October 22 at the **Traditional Building Exhibition and Conference in Baltimore**. The award's namesake, Clem Labine, stated: "Al is the ideal recipient of this award. His work to promote the humane values of classicism sets a standard for a life with a purpose."

RIEGER GRAHAM PRIZE DEADLINE ANNOUNCED

The deadline for application for the third bi-annual Rieger Graham Prize is on **Monday, November 2, 2009**. The centerpiece of the prize is a three-month affiliated fellowship at the American Academy in Rome, the premier American overseas center for independent study and research in the fine arts and humanities. The total

award includes Academy fees, travel allotment, and award stipend. The three-month stay must occur between September 2010 and May 2011. The prize is awarded once every two years by a jury appointed by the ICA&CA and is open to United States citizens with a Bachelor of Architecture degree, Master of Architecture degree, or Master of Fine Arts degree prior to the start of the fellowship. For more information and the application go to www.classicist.org/awards-and-prizes/rieger-graham-prize.

2010 ARTHUR ROSS AWARDS SUBMISSION DUE

Nominations and submissions for the 2010 Arthur Ross Awards are due **Tuesday, December 15, 2009**. Awardees are chosen each year by a selection committee made up of members of the ICA&CA Board of Directors, Advisory Council, Fellows, and distinguished members of related professions. For complete information on criteria and submission requirements, visit www.classicist.org/awards-and-prizes/arthur-ross-awards.

THE CLASSICIST NO. 9

The Editor of the Classicist invites contributions to the peer-reviewed essay section of Classicist No. 9. Essays may relate to any aspect of the theory, history, and practice of the classical tradition in architecture and related arts. Outline proposals of no more than 500 words should be submitted to Dr Richard John at rjohn@miami.edu before December 1, 2009.

SAVE THE DATE

Sponsored by Taconic Builders, Inc.

ICA&CA HOLIDAY COCKTAIL PARTY AND BENEFIT AUCTION

THE RACQUET AND TENNIS CLUB, 370 PARK AVENUE, NYC SATURDAY, DECEMBER 5, 2009; 6:00 – 8:00 PM

Jacket and tie required for men; equivalent for ladies.

The bi-annual Holiday Cocktail Party and Benefit Auction will feature one-of-a-kind objects and artworks specially curated by Co-Chairs Michael Simon and Maureen Footer and donated by ICA&CA members and friends. Reserve your tickets online at www.classicist.org.



Architectural Woodwork | Monumental Stairs | Marine Interiors

Zepsa Industries

zepsa.com



Scofield
RICHARD SCOFIELD
HISTORIC LIGHTING

SHOWROOMS IN NEW YORK AND CONNECTICUT
SCOFIELDHISTORICLIGHTING.COM | 860 767-7032

ICA&CA Chapter News

SOUTHERN CALIFORNIA

As part of its 2009 theme, "Vernacular Architecture in Los Angeles," the Southern California Chapter collaborated with Habitat for Humanity for its inaugural Affordable Housing Design Competition. Twenty firms nationwide — architects, interior designers, landscape architects, and those in the construction industry — entered the competition. The brief called for the design of a single-family home that captured Southern California vernacular styles including



WINNING ELEVATIONS IN SOCAL'S HABITAT FOR HUMANITY DESIGN COMPETITION.

California Craftsman, English Colonial Revival, and Spanish Colonial Revival. The goal for the competitors was to inspire affordable, neighborly, sustainable homes that can be readily built by Habitat volunteers. The entries will be published in an architectural pattern book to be distributed by Habitat for Humanity. The competition took place at Almont Yard in West Hollywood, home to Claremont Furnishings, Hollywood at Home, and Nathan Turner. The Chapter is very grateful to these companies. Waterworks hosted the awards ceremony at its West Hollywood showroom on July 16. From July 20 through July 31, the projects were on display for public viewing at the Pacific Design Center. This program was made possible by the generous support from DC Williamson General Contracting, Inc.; McCoy Construction; Waterworks; Richard Holz, Inc.; Taylor Development; William Hefner Architecture; KAA Design Group; Beverly Delivery, Inc.; and the Pacific Design Center. Please see page 12 for the announcement of the winning entries.

Since the last printing, tours included Stern House, a Gerard Colcord home; the historic Casa del Herrero in Montecito; and a Cliff May home. The private tour of Stern House took place on March 21. The house is a skillfully interpreted English country house, which incor-

porates design details from the 15th to 19th centuries. During the event, Bret Parsons, author of *Colcord Home* and ICA&CA-SCC Board member, signed copies of his book. On August 1, Chapter members toured the Spanish Colonial Revival, Casa del Herrero. Designed by the architect George Washington Smith, the house is listed in the National Register of Historic Places and recently received National Historic Landmark status. The house was completed in 1925 and is unique for its extensive use of Mediterranean tile as well as its 13th to 18th century Spanish furniture, antique architectural detail, and artwork. ICA&CA-SCC Board member Marc Appleton provided a talk on this famous estate followed by tours of the house, workshop, and gardens. The visit was followed by a lunch in downtown Santa Barbara, and the event concluded with a walking tour of some of the city's historic architecture. Finally, on September 12, the Chapter hosted "On the Trail with Cliff May." Considered the pioneer of the California Ranch House, Cliff May is noted for combining the Western Ranch House and Hispanic Hacienda styles with elements of modernism. Daniel Gregory, author of *Cliff May and the Modern Ranch House*, provided a lecture and Marc Appleton led the tour. The Chapter is grateful to the following sponsors of the home tours: Gwynne Gloege; Exquisite Surfaces; SPJ Lighting, Inc.; Victoria Jackson; Bill Guthy; Millworks, Etc.; Sebastian and Associates; and Osinoff General Contractors.

SoCal academic offerings included both studio classes and lectures. In February, ICA&CA member and noted artist Jeff diCicco taught a course on "Linear Perspective." Following this, at USC in June, Andrea Keller taught "French Enlightenment and the Beginnings of Modernism," examining the development of the neo-classical style. Ms. Keller explored this from the beginning of the Enlightenment through the discovery of new materials in the middle of the 19th century. She explained how these materials revolutionized construction and forever changed the development of architectural form. Thomas Gordon Smith taught a class entitled "Elements and Methods of Classical Architecture," at USC.

This course offered a comprehensive overview and detailed analysis of the forms, professional methods, and philosophical ideas that drive classical architecture. On October 3, Calder Loth, architectural historian, will teach "Architectural Literacy." On November 7, ICA&CA Fellow and Instructor Steve Bass will teach "Introduction to Proportion in Architecture." The academic programming has been made possible by the generous support from Zeluck, Inc.; The I-Grace Company; Tim Barber, LTD; Real Illusions; Hablinski and Manion Architecture; and Scott Design Group.

For more information, contact SoCal Chapter Coordinator, Diane Sipos, at (310) 396-4379 or diane@classicist-socal.org. Please visit www.classicist-socal.org.

NORTHERN CALIFORNIA

Over the summer, the Northern California Chapter held several successful events, starting with a book-signing and lecture with Victoria Kastner, the official historian of Hearst Castle in San Simeon. She gave a spectacular lecture on her new book, *Hearst's San Simeon: The Gardens and The Land*, and spoke about the legendary architect Julia Morgan and her client, William Randolph Hearst. In July, the Chapter was fortunate to have Thomas Gordon Smith teach a course on "The Orders." In the same month, the Chapter organized an exclusive tour called "Private Healdsburg," which included the residence of interior designers Andrew Fisher and Jeffrey Wiseman; the residence of culinary chefs Nancy Oakes and Bruce Aidells; the home of interior decorator Myra Hoefer; the charming garden of Richard Miller; and a tour of architect John Carl Warnecke's eponymous ranch.



FROM LEFT TO RIGHT: TIMOTHY F. MARKS, SUZANNE TUCKER, STEPHEN SALNY, AND PAUL WEAVER AT THE NOCAL BOOK SIGNING AND LECTURE "MICHAEL TAYLOR: INTERIOR DESIGN," JANUARY 2009.



NOCAL "PRIVATE HEALDSBURG" TOUR, RESIDENCE OF ANDREW FISHER AND JEFFREY WISEMAN.

In mid-September, the NoCal Chapter offers a weekend-long tour at national historic landmark Hearst Castle in San Simeon. Participants will enjoy a Saturday afternoon at the ranch of Hearst Castle sketching with Stephen Harby and touring "behind-the-scenes" in the evening. A private tour of the grounds follows with Victoria Kastner on Sunday morning.

In October, the NoCal Chapter partners with the San Francisco Fall Antiques Show for a book signing and lecture with John Saladino as he speaks about his recent publication, *Villa*. In November, the chapter has invited New York architect and ICA&CA trustee Gil Schafer to speak about his work as well as his insights about the ICA&CA. Also in the fall, Diane Dorraen Sacks, a writer and authority on design, will speak about Bay Area interior and furniture designer John Dickinson.

Lastly, please join the NoCal Chapter in welcoming nine new additions to the Board of Directors: Suzanna Allen; John Dorr, AIA; Coburn D. Everdell, AIA; Joseph Lucier; James Marzo; Greg McIntyre; John James Toya; Amy Weaver; and Shay Zak, AIA. The Chapter is fortunate to have these very talented individuals joining the board.

For more information about the Northern California Chapter's activities, please contact Chapter Coordinator, Jeanne Chan, at (415) 445-6700 or info@classicist-nocal.org. Please also visit www.classicist-nocal.org for the latest updates on events.

CHARLOTTE

The Charlotte Chapter and the Beaux Arts Alliance are planning an autumn tour of Biltmore Estate, George Washington Vanderbilt's home in Asheville, North Carolina. The 255-room mansion designed by Richard Morris Hunt boasts extensive grounds and gardens by Frederick Law Olmsted. The tour also will include Biltmore Village and Hunt's All Soul's Episcopal Cathedral. The rest of the village was designed largely by Hunt's field architect, Richard Sharp Smith. Smith stayed in Asheville after Biltmore was completed, started his own practice, and helped define Asheville's distinctive appearance. The date and details of the tour are to be announced.

The Charlotte Chapter is also working with the Congress of Residential Architecture (CORA), to develop a series of "lunch and learns," which will showcase the work of local artisans and the offerings of design and craft oriented vendors. Dates and details of these events are to be announced.

For more information about these events and about the Charlotte Chapter, please call (704) 602-4894 or email charlotteclassicist@yahoo.com.

CHICAGO-MIDWEST

The Chicago-Midwest Chapter is pleased to offer a private cocktail party on November 2, 2009 at the Charles Goodspeed Penthouse, currently owned by Hollye and Jeffrey Jacobs. Designed in 1927 by David Adler and originally decorated by Frances Elkins, the Goodspeed duplex is one of Chicago's most important residences. Adler and Elkins's original federal and Art Deco-style detailing are dramatically set against the sweeping backdrop of Lake Michigan and Lincoln Park. Stephen M. Salny, author of *The Country Houses of David Adler and Frances Elkins, Interior Design*, will remark on the apartment's design during the evening. On November 3, at the Michael Taylor Designs Showroom in the Merchandise Mart, Stephen Salny will also present a lecture on "Michael Taylor: Interior Design."

In November (date to be announced), the Chapter presents a lecture by Samuel Roche and Aric Lasher on the plan of Chicago proposed by Daniel Burnham and Edward Bennett in 1909. They will include analysis as well of plan proposals by Frederick Law Olmsted, Frank Lloyd Wright, Jens Jensen, and Ludwig Hilberseimer. This event will be held at the newly restored Driehaus Museum. Lastly, the Chapter has developed a Bi-Monthly Chicago Sketch Club, an informal gathering of Chicago area architects, artists, and others interested in studying Chicago's fine vernacular architecture.

Please visit www.classicistchicago.org for details on all the events described above, or contact Chapter President, Christopher Derrick, at (847) 606-6460. Space is limited so register soon. For the Sketch Club, join the Chapter's Facebook group "Sketch Club of the Chicago-Midwest Chapter of the ICA&CA."

FLORIDA

The last nine months have been a whirlwind of activity bringing educational opportunities to Chapter members and developing a network that enables five Florida districts to serve the needs of their areas as well as local ICA&CA members. Currently, the approach has momentum and president Cliff Duch is working to identify key



PHILIP SHUTZE'S GOODRUM HOUSE — FLORIDA CHAPTER TOUR IN JUNE.



FRANK COSTANTINO DURING WATERCOLOR WORKSHOP.

advisory board members from each district. In addition to supporting the regions, this list of candidates will be considered for the Board of Officers in 2009/2010. Elections will be held in 2011. As of this printing, Stephen A. Mouzon has agreed to serve on the Southeast District advisory board, joining Jaime Torrez of the Fairfax & Sammons Palm Beach office. The Central Florida District has also added its first advisory board member: Troy Beasley of Beasley & Henley Interior Design.

To date, the Chapter has brought three events to members this year. In January 2009, the Jacksonville Chapter of the American Institute of Architects (AIA) and the ICA&CA Florida Chapter conducted a lecture/presentation showcasing the work of local classicists. The attendance was close to 100 and the excitement set the tone for the rest of the year.

During the weekend of April 18, again in partnership with the Jacksonville Chapter of the AIA, the Chapter presented Frank Costantino for a watercolor workshop at the picturesque Cummer Museum in Jacksonville. Mr. Costantino currently resides in Boston and is one of the premier watercolor artists in the country. The workshop participants were a diverse group of architects, landscape architects, and accomplished architectural illustrators.

Mr. Costantino's style of teaching was "hands-on" as he presented numerous exercises in color, technique, and composition. The Chapter thanks Frank for sharing his expertise and the Cummer Museum and sponsor, Manning Building Supplies (Jacksonville), for making the event possible.

The Florida Chapter was honored to host Professor Elizabeth (Betty) Dowling at Sea Island, Georgia during the weekend of June 6. Professor Dowling, well-known to the ICA&CA constituency, currently serves as the ICA&CA Southeast Chapter's president. She teaches at

Georgia Tech where she directs the Masters program in Classical Design; she is also a respected author. For the event participants, Betty provided a lecture at the Cloister Resort. Her knowledge of Philip Shutze's practice provided valuable insight into his design career and her tour of the Goodrum Residence was captivating.

In addition to the lecture and house tour, the Sea Island office of Harrison Design Associates arranged for a tour of the New Cloister, which replaced the original Addison Mizner design, but retains the Mediterranean Revival esthetic.

Special thanks go to Loewen Windows & IDAC of St. Simons for sponsoring the event. Steve Spandrel, Chad Goehring, and Brian Coody from the offices of Harrison Design Associates managed the coordination. Thanks to all for making the weekend such a success.

Currently, the Florida Chapter is planning education programming for the next four quarters. Advisory Board Member, David Case of Richard Skinner & Associates, is preparing a lecture on interior moldings; details to be announced soon.

Finally, the Florida Chapter announces a special humanitarian and cultural sketching and photo tour of Havana and Cienfuegos, Cuba for spring 2010. Stay tuned for updates posted on the Florida Chapter news portion at www.classicist.org. E-mails will also go out to current ICA&CA members.

Contact Clifford G. Duch, Chapter President, for more information at cliff@arch-cd.com or (904) 302-9848.

MID-ATLANTIC

On April 25, Jamie Walsh, ASLA of Graham Landscape Architects led a sketch tour of the Dumbarton Oaks Gardens in Georgetown. Designed by noted landscaper Beatrix Farrand, this enchanting ten-acre garden incorporates elements of traditional French, English, and Italian gardens. The sketch tour was organized in conjunction with ASLA and sponsored by Landscape Forms.

On May 13, members of the Mid-Atlantic Chapter joined the National Civic Art Society and the Congress for New Urbanism at a reception at the Arts Club of Washington to celebrate spring and our shared mission of advocating for the artistic enhancement of Washington. The Arts Club of Washington, founded in 1915, is located in one of the finest Federal townhouses in Washington, the James Monroe House of 1806.

This Chapter will present the following events in the fall (dates to be announced):

- A sketching tour of Meridian Hill Park on 16th Street in Washington DC will be led by Jamie Walsh, ASLA of Graham Landscape Architects. The park was designed by Ferruccio Vitale, a landscape architect who worked with John Russell Pope on the National Gallery of Art as well as many notable estates of the early-20th-century.
- The chapter is planning another tour of the studios of sculptor Raymond Kaskey and the architectural plaster studio of Robert and John Giannetti. The artists will lead visitors through their respective studios describing the process from sketch, to model, to finished product.
- Restore Media's Traditional Building Exhibition and Conference will be in Baltimore in October. Several chapter members are involved with the continuing education presentations that are part of the conference.

For more information please contact David Neumann, Chapter President at David@NLBArchitects.com or visit the chapter's Web page for schedule updates at www.classicist.org.

OHIO AND ERIE

In September, tours of several historic churches are anticipated. The Cleveland Diocese of the Roman Catholic Church expects over 50 churches to close in the next two years, prompting the Chapter to schedule as many tours as possible. In May and June of this year, four church tours were offered by the chapter, drawing over 500 people at a time. (Yes, 500!) Many architects participated and will receive continuing education credits; their sketches and photographs from the tours will be displayed in an exhibition at the annual chapter holiday party in December.

Also in September, a Saturday morning drawing tour will take place in the historic village of Gates Mills. Architects, contractors, and designers will help document several of the Greek Revival cornices and doorways of the village. The resulting scale drawings are intended to become the basis for a parallel of regional residential architecture and will be displayed at a reception in Gates Mills in the spring of 2010.

On October 15, to celebrate the ICA&CA's publication of *Edwin Howland Blashfield: Master American Muralist*, the book's editor, Mina Wiener, is scheduled to speak at an event in the Metzenbaum Federal Courthouse in Cleveland. The courthouse was designed by Arnold Brunner and is home to Blashfield's mural "The Law." A tour of the courthouse's significant courtrooms and offices and their paintings, including those by Frederic Crowninshield, Kenyon Cox, Francis Millet, and William Hickok Lowe will be



JAY GRAHAM OF GRAHAM LANDSCAPE ARCHITECTURE IN ANNAPOLIS, MD DURING THE DUMBARTON OAKS SKETCH TOUR WITH THE MID-ATLANTIC CHAPTER.



OHIO AND ERIE TOUR OF ST. COLMAN. Photograph by Marie-Rose Andriad.

conducted. The following week, a tour is planned of the Mahoning County Courthouse in Youngstown, where a series of Blashfield murals is located. These events kick-off a series of tours of Beaux Arts-style civic buildings (built as a part of Cleveland's Group Plan of 1903) in conjunction with the extensive reconstruction of the Mall and underground Cleveland Convention Center soon to be under way.

The chapter's annual Holiday Party will take place on December 15 at The Union Club of Cleveland. Mark your calendars! The event is free for members. Also note that wintertime classes on molding profiles and the orders of architecture will take place in downtown Cleveland in January and February, details to be announced.

Please contact David H. Ellison, President, at (216) 631-0557 or david@dhellison.com for further information on upcoming Ohio and Erie Chapter events.

PHILADELPHIA

The Philadelphia Chapter was ecstatic that the first Alvin Holm Annual Lecture, a presentation by Isabelle Gournay entitled "Paris on the Schuylkill," attracted a standing-room-only crowd at the Philadelphia Athenaeum in March. Conceived as a follow-up to her book *Paris on the Potomac*, the talk, specially created for this event, explored the influence of the French and the École des Beaux Arts on the cultural and architectural environment of Philadelphia. In May, the chapter partnered with Winterthur to present the "Winterthur Garden and House Tour," featuring an interiors tour by chapter president, Barbara Eberlein.

During the spring, the Chapter engaged in a series of public awareness campaigns highlighting the history of the Benjamin Franklin Parkway and how current proposed projects endanger its founding vision. This spring also marked a new programming partnership with the Royal Oak Foundation; the organizations co-partnered a series of three lectures on London's Country Houses, Sir John Vanbrugh, and Dumfries House.

This fall promises to be entertaining and educational. As a timely follow-up of the Winterthur tour, the season begins on September 16 with a presentation at the Philadelphia Athenaeum by Winterthur historian and author, Maggie Lidz, who will talk about *The du Ponts: Houses and Gardens in the Brandywine, 1900 – 1951* (Acanthus Press, 2009). On October 3, the Chapter presents a special opportunity to tour Nemours, a former du Pont family mansion. This day-long event provides an insider's tour of the newly restored house and grounds. John Milner Architects and other key participants in the restoration will offer their unique behind-the-scenes perspective. Next, the confluence of art, architecture, and music will be celebrated on November 6 to mark the release of the ICA&CA's book, *Edwin Howland Blashfield: Master American Muralist*, at the famed Curtis Institute of Music. The evening will include a reception and presentation in a room with one of Blashfield's murals, followed by a concert by Curtis musicians. The Chapter plans to partner with the Royal Oak Foundation to present a series of lectures in the fall, and with the Greater Philadelphia Historic Homeshow in January 2010.

Details for these and future events will be sent to friends and members via e-mail. If you have not been receiving notices of past gatherings, please call (215) 790-0300 or e-mail icacaphila@verizon.net.

NEW ENGLAND

This past June, the New England Chapter elected the following officers: John P. Margolis, *President*; Sheldon Kostecky, *Executive Vice President of Education*; William S. Young, *Vice President*; Susan Close, *Treasurer*; Teresa Silverman, *Secretary & Chapter Coordinator*.

In late July, the Chapter launched its own Web site www.classicist-ne.org. The newly elected John Margolis, is delighted meanwhile, to report on numerous other activities. On May 9, board

member Oliver Bouchier arranged a tour of the 250-year-old Shirley-Eustis House, the former Massachusetts Governor's Mansion in Boston. In recent years Oliver's construction firm, Payne-Bouchier, participated in the structure's challenging restoration. Expert David Autio spoke about ornamental plastering. Fellow Chapter board member and landscape architect, Greg Lombardi, completed the afternoon with a tour of the restored gardens and a historic snapshot of the evolving urban landscape.

On March 12, Sheldon Kostecky gave an erudite talk, "Classicism 101: Applying Principles of an Ancient Building System Today" at the Traditional Building Exhibition and Conference in Boston. The following day on March 13, Eric Inman Daum prompted a stimulating discussion with his talk, "Designing Good Buildings: Commodity, Firmness, and Delight." Both events served as an eloquent lead-in to New York designer and national ICA&CA trustee Christine Franck's "Traditional Millwork and Interiors." Her joint lecture with co-author Brent Hull introduced their new book: *Traditional American Rooms*.

On April 25, professional members Susan and Carl Close of Hammersmith Studios of West Concord, Massachusetts, played host for an afternoon tour of three artisan studios: "Ironworking, Sculpting, and Carpentry: A Spring Field Trip to West Concord's Artisans Workshops." At their own studio they gave a demonstration on traditional ironworking techniques. The day continued with visits to the West Concord Sculpture Studio and J.H. Klein Wassink Woodworkers.

On the education front, Sheldon Kostecky, continues to reinforce the Institute's mission in many ways. Next year holds promise for an ICA&CA Certificate Program at the Boston Architectural College (BAC). Meanwhile, this fall Sheldon is offering a seminar at the BAC entitled, "Classical Architecture: An Introduction." Simultaneously, member Nick Daveline is offering a design studio "Classical Architecture Drawing."

Sheldon and fellow board members Mike Tyrell, David Brussat, and Oliver Bouchier are also organizing an exhibition at the BAC, scheduled for fall 2010, which will showcase regional, and perhaps unknown, talents working in the classical tradition. A committee has been formed to decide the submission and selection process.

Fellow board member and architectural critic for the *Providence Journal*, David Brussat, has offered to link his blog news.beloblog.com/ProJo_Blogs/architecturehereandthere/ with the Chapter's new Web site. His articulate review of past, present, and proposed architecture promises to provoke discussions about the classical tradition and its relevance today. Please review his recent article "Modernist Rampage in Providence."

Outgoing Chapter president, Eric Daum, proposed that current vice president, William Young, chair a new Awards Committee to inaugurate the Chapter's own Bulfinch Awards. The first awards selection will occur in conjunction with the BAC Exhibition slated for fall of 2010.

Eric will continue to serve on the board and is chair of the Shawsheen Village Planning Study in Andover, Massachusetts. This ongoing work will significantly further advocacy for "Smart Growth" in suburban planning and support the Chapter's mission. In collaboration with the Congress for New Urbanism, the two organizations are partnering to create a sympathetic Master Plan for Shawsheen Village. The Chapter hopes to engage public interest through future presentations and a possible design charrette.

On June 20, Eric Daum and Chapter member, Greg Colling, organized The Newburyport Symposium: "The New England Custom Houses of Robert Mills, America's First Architect." Greg started the day-long symposium with a lecture on Robert Mills and his influences.

Vice president William Young; secretary Teresa Silverman, and Chapter member Raffi Berberian have scheduled a tour of "Four Private Homes of the Back Bay and Beacon Hill" in Boston on September 26. Space is limited and is open only to members and their guests; please register early for this special opportunity.

Lastly, plans are under way for a possible lecture on Palladio with internationally recognized architectural historian and author, James Ackerman. Also, the firm of Shepley Bulfinch Richardson & Abbott has agreed to offer a special private exhibition of their rare archival drawings, books, and documents. Details will soon follow on our Web site.

For more information on New England Chapter activities and events, contact John P. Margolis at jpmargolis@classicist-ne.org or call (978) 922-4440.



TOP: SHIRLEY-EUSTIS MANSION WITH TOUR GROUP ASSEMBLED OUTSIDE. ABOVE: SHIRLEY-EUSTIS HOUSE EXECUTIVE DIRECTOR ANDREA TAAFFE TALKS ABOUT THE BUILDING'S SIGNIFICANCE.

ROCKY MOUNTAIN

The Rocky Mountain Chapter, serving Colorado, Idaho, Montana, Utah, and Wyoming, was made official on March 6, 2009. The Chapter's board is comprised of Don Ruggles, Chad Cox, Eric Mandil, Lisa Woodward, Christine Gardner Gould, Melissa Mabe-Sabanosh, Mike McPhee, and Terry Vitale. Assisting the board in an advisory capacity are noted Colorado historians Tom Noel and Stan Dempsey. The Chapter's board would like to thank The Clinton Family Fund for its generous contribution, which helped establish the Rocky Mountain Chapter.

The Chapter presented two receptions in June to introduce ICA&CA to Colorado. The first reception was a private fund raiser given by Mary Pat Link and John Strohm in their breathtaking home outside of Denver. They gathered 75 people to learn more about ICA&CA's mission and the Chapter's upcoming classes, tours, and programs. The Chapter also held a public membership kick-off reception on June 23 at historic Hotel Teatro in downtown Denver. The fantastic turn out for both events reflected the regional enthusiasm for the newly-formed chapter.



ROCKY MOUNTAIN CHAPTER BOARD: BACK ROW (LEFT TO RIGHT): CHAD COX, DON RUGGLES, MIKE MCPHEE; MIDDLE ROW (LEFT TO RIGHT): ERIC MANDIL, CHRISTINE GARDNER GOULD, GAIL BREECE; FRONT ROW (LEFT TO RIGHT): LISA WOODWARD AND MELISSA MABE-SABANOSH; NOT PICTURED: TERRY VITALE. *Photograph by Pam Camelio.*

The Rocky Mountain Chapter's proposed fall event calendar is ambitious and includes a double-decker bus tour and lecture to study the work of Jules Jacques Benois Benedict in and around Denver (see below) and a walking tour to explore Denver's Civic Center. Proposed classes include "Ink Wash in the Classical Style" and "Designing Meaningful Details to Create a Classical Interior."

The Chapter has also embarked on several long-term projects:

- **Railroad and Architectural Expansion in the West:** This project will be a collaboration with the Colorado Railroad Museum to develop a lecture series and book on how westward expansion impacted the regional built environment.

- **Community Coloration:** The focus of this program is to restore classical works of architecture to their original, vibrant colors. The civic buildings — libraries, courthouses, and post office buildings — could be ambassadors in this effort. Returning these buildings to their original inner beauty instills pride of community and inspires patrons and residents.
- **Jules Jacques Benois Benedict Tour and Exhibit:** One of Colorado's most prominent architects is the focus of a series of tours that highlights and discusses the design of his many homes, churches, and institutional buildings in and around Denver. This series will also include an exhibit at the Denver Art Museum and the development of the architect's biography.

For more information about Rocky Mountain Chapter programs and events, please contact Gail Breece at (720) 266-6787 or info@classicist-rm.org.

SOUTHEAST EDUCATIONAL EVENTS

It is the mission of the educational committee to promote traditional and classical design through scholarly lectures, architectural tours, demonstrations by artists and craftsman, and an intensive professional development program. Often presented in historic homes or gardens, the artisan's workshop, or the artist's studio, each event offers members and non-members alike an opportunity to enjoy the company of fellow enthusiasts.

In February, architectural professor and historian, Elizabeth M. Dowling, kicked off the year with a program entitled "Shutze's Response to Modernism." Her presentation examined how representative projects of the 1930s responded to the emerging modern style while adhering to traditional design principles. These works included the Mirador Room, the Ben Smith House, and the Goodrum House. The award-winning Goodrum House, with murals by Allyn Cox and its famed red Chinese Chippendale rail, was the location for this presentation. It is presently the Southern Center for International Studies.

At the end of March, Michael Mesko taught a two-day intensive course on advanced elements. The course was held at the Michael C. Carlos Museum on the campus of Emory University. The venue served as a "living" classroom and enabled participants to study and examine pre-eminent works by renowned architects Philip T. Shutze, Henry Hornbostel, Ernest Ivey, and Lewis E. Crook.

In April, thanks to board member Laura DePree, the Chapter was invited to participate in the "Buckhead in Bloom" home tour, sponsored by the Atlanta Preservation Society. On April 30, we played host to our first members only event, a reception and presentation entitled "Frazier &



FAR LEFT: JUDY NEUKRUG GIVING A DECORATIVE PAINTING DEMONSTRATION FOR THE SOUTHEAST CHAPTER. LEFT: LAURA DUPREE, ANNE FAIRFAX, BETTY DOWLING, AND RICHARD SAMMONS AT THE SHUTZE AWARDS ON FEBRUARY 21, 2009.

Bodin: Atlanta's Forgotten Architects." Held at an historic home designed by Frazier & Bodin, presenter Wright Marshall of Revival Construction discussed how the firm's lasting body of work was achieved in large part from their commitment to collaboration with artisans, builders, and manufacturers. This approach was visionary for the time. Mr. Marshall also regaled attendees with stories of their highly eccentric roster of clients that included an heir to the Coca-Cola fortune, Asa Candler, whose estate included a zoo that was home to a pair of elephants named Coca and Cola.

On May 2, at Bulloch Hall in Roswell, Georgia, chapter members enjoyed a lecture and book signing by author and landscape historian James Cothran. His presentation, "Historic Plants of the Antebellum South" provided an overview of the types and applications of exotic and ornamental plants of the antebellum era. Mr. Cothran also discussed the use of plants for architectural effect by examining the regional interpretations of southerners' grand tours of Europe. After the presentation, historian Gwen Kohler treated participants to a private tour of Bulloch Hall, a 1840s Greek Revival mansion that served as the childhood home of Mittie Bulloch Roosevelt, mother of President Theodore Roosevelt and grandmother of First Lady Eleanor Roosevelt.

The Chapter held a membership drive and networking social at Engine 11 Firehouse Tavern on May 27. This casual meet-and-greet provided a venue for prospective members to learn more about the ICA&CA, upcoming events, chapter leadership, and ways to get involved. In addition to securing a number of new members, the Chapter is pleased to welcome Diane Coker as the new chair of membership.

Charles Calhoun, founder of Calhoun Design & Metalworks, opened his studio for "The Art of Wrought Iron," the first event in the Timeless Trades Educational Series. The courses in this series provide an opportunity to meet artisans in their studios and workshops, learn more about their craft, and to see first hand how they work. Mr. Calhoun's presentation began with a discussion of stair layouts and plans, and explored how their configuration affects the design, termination, and production

of handrails, pickets, and transitions. The group left with a greater appreciation for the training, strength, and skill required to produce wrought iron of exceptional quality.

In June, the second program in the Timeless Trades Series featured Judy Neukrug, founder of Finished for a presentation and demonstration entitled "The Art of Decorative Painting." In addition to providing an overview of decorative and faux finishes, Ms. Neukrug discussed design trends and unexpected applications. She followed the discussion by demonstrating the layering techniques and array of tools and brushes used to create a perfect (faux) bird's-eye maple.

SHUTZE AWARDS

The Southeast Chapter held their third annual Philip Trammell Shutze Awards for excellence in the classical tradition on February 21, 2009. The program is currently the only regionally-based classical design recognition in the United States.

For the first time, the invitation for submission was opened up to the geographic Southeast. With more than 60 entries, honors went to 11 firms from Washington, D.C. to Coral Gables, Florida, and many points in between. The impressive body of work merited 14 awards recognizing excellence in residential and institutional design, craftsmanship, interior design, and garden design. The Shutze Awards were further enhanced by the recognition of Emerging Classicists; a new program designed specifically to honor the work of students and architectural interns. Please see www.classicist-se.org for a complete list of 2009 winners.

GODDARD CHAPEL DEDICATION

After a six-month restoration project, a rededication ceremony for the Philip Shutze-designed Goddard Memorial Chapel at Grady Hospital in Atlanta was held on June 3, 2009. Southeast chapter members Steve Markey, Jonathan Lacrosse, and Clay Ulmer donated their service as architectural consultants on the project, which represents one of three such interdenominational chapels designed by Mr. Shutze. The Goddard family stepped forward again to fund the project, along with the Henry Grady Health Systems Foundation and the John H. and Wilhelmina D. Harland Foundation.

SAVE THE DATE

The Fourth Annual Philip Trammell Shutze Awards will be held on Saturday, February 20, 2010 at the Atlanta History Center in Atlanta, Georgia. The SE Chapter of the ICA&CA invites submissions for the 2010 Shutze Awards, including the newly added Emerging Classicist Category, to recognize excellence in classical and traditional design.

For complete details, contact Susan Garrett Mason, SE Chapter Coordinator, (678) 447-3996 or visit www.classicist-se.org.

The original project, which was completed in mid-1957, represents the last religious space Mr. Shutze designed and is considered one of the most intact of his remaining interiors. Master Carver Herbert Millard executed the outstanding carvings for Mr. Shutze, and the interior millwork design is as exceptional as its craftsmanship. The original finishes were painstakingly researched and replicated and the pews were removed and refinished offsite, allowing the use of more durable and appropriate oil-based paints.

Subsequent additions to the hospital had eventually blocked all of the chapel's windows, so the team of architects created a subtle back-lighting effect to return more of the original warmth and character to the chapel. The original curtains were recreated per Mr. Shutze's design using Scalandre silk damask and handmade custom tassels. The contractor team of Mark Palmer, Inc. exhibited a remarkable reverence for the work, faithfully carrying out every detail of the restoration. The chapel is illustrated in Elizabeth Dowling's book *American Classicist: The Architecture of Philip Trammell Shutze* (Rizzoli, 2001).

For more information about the Southeast Chapter, contact Susan Garrett Mason, Chapter Coordinator, at (678) 447-3996 or smason@classicist.org.



THE GODDARD FAMILY AT THE RENOVATED SHUTZE-DESIGNED GODDARD MEMORIAL CHAPEL AT THE RECENT REDEDICATION IN JUNE 2009.

SOUTHEAST YOUNG ICA&CA

The Southeast Young ICA&CA is in its second successful year of existence. The group recently elected a new board after several members moved on to graduate programs and other opportunities. The Young ICA&CA has strong representation from Atlanta area firms including Harrison Design Associates, William B. Litchfield Residential Designs, Cooper Carry, and Historical Concepts. The group is continuing its mission of reaching out to students and young professionals to advance the appreciation and knowledge of classicism and the allied arts and is closely integrated with the structure and events of the Southeast ICA&CA. Recent events include a sketching day at the Cyclorama Building in



YOUNG ICA&CA VISIT TO MACON, GA.

Atlanta's historic Grant Park; a visit to Macon, Georgia that included tours of the Hay House and Rose Hill Cemetery; a question and answer session with local "green" contractor, Matt Hoots; and a sketching day at Emory University to study Philip Shutze's Glenn Memorial Chapel and Little Chapel. They have also volunteered for Habitat for Humanity and held two social events to promote membership and networking.

For more information, visit Facebook (group name Young ICA&CA), email us at YoungICA@gmail.com, or visit the Southeast Chapter website at www.classicist-se.org.

TENNESSEE

"The Great Unraveling of Modern Architecture" is the way one person described the Tennessee Chapter's Seven Series, a tutorial on the classical language of architecture. The seven monthly classes from February through August were co-sponsored by The Classical Arts Studio and were taught by Nashville architect Eric Stengel.

Stengel unraveled the tangled knot of misinformation that resulted when Modernism rejected 3,000 years of accumulated architectural knowledge and made its own way for a century. It wasn't just an unraveling, though. Stengel also

began rebuilding the language of classicism, beginning with Phi, the Golden Section, the proportion embedded throughout nature. From Phi the class learned the importance of scale and hierarchy, and how the ancients were able to begin with the proportions of the human body and build massive temples that still feel "right." Classes also included a discussion on the inherent greenness of the way the ancients built. Stengel showed examples of modern buildings that outlived their usefulness and were packed into landfills. On the other hand, the Pantheon in Rome has been in continuous use for nearly 2,000 years and has only seven cracks.

Class members also learned why double-pane windows come with a 10-year warranty against seal failure: Because people won't buy them without it — but eventually, they do all fail and end up in the landfill, negating any energy savings. Stengel's wit was at its most entertaining when he answered critics' pat dismissals of classical architecture as pastiche, boring, and repetitive. To the charge that the classical language is repetitive, he contrasted 3,000 years of diverse applications of the classical language with picture after picture of modern high-rise monoliths used for public housing. His point was driven home with the fact that many of these works of the 1950s and 60s have been demolished or abandoned to no one's regret.



TENNESSEE CHAPTER INSTRUCTOR ERIC STENGEL WITH NOTRE DAME GRAD KATY MCCULLOUGH.

Eric Stengel earned a Master of Architecture from Harvard University and a Bachelor of Fine Arts from Parsons School of Design in Manhattan. He also received decorative arts training at the Musée du Louvre in Paris and he holds the Certificate in Classical Architecture from the ICA&CA.

For more information about the Tennessee Chapter, contact Brent Baldwin, Chapter President, (615) 252-4204, cbbaldwin@bwsc.net. For regional chapter information, contact East Tennessee Chair, Jonathan Miller, (685) 602-2435; or West Tennessee Chair, Carter Hord, (901) 527-9085.

TEXAS

The Texas Chapter presented a reception showcasing the travel sketches of numerous Dallas and International Architects at the Meadows Museum on April 7. Also this spring, the Chapter



LARRY E. BOERDER, STEPHANIE GAGNARD, JESSICA ESQUIVEL, AND ADRIAN CALLAIS OF THE TEXAS CHAPTER AT THE MEADOWS MUSEUM ON APRIL 7.

offered a lecture with Elizabeth Dowling and featured an exhibit based on her book, *New Classicism*. The exhibit was open the public for a month at the Center for Architecture, the new home of the San Antonio AIA at the historical Pearl Brewery complex.

A Summer Soiree and Studio Tour occurred on August 14 at the Vignini Studios in San Antonio. It was a fine opportunity for current and prospective chapter members to get acquainted and enjoy a tour with Nicola Vignini; his studio and school is Texas' most renowned for its faux-finished furniture and European-style decorative painting.

Upcoming Texas Chapter events this fall include guest lecturer Richard Cameron on October 9 at the San Antonio Museum of Art. In recognition of the recent reprint of Stuart & Revett's *Antiquities of Athens*, Mr. Cameron, co-founder of the ICA&CA, will discuss the legacy of Stuart and Revett's seminal work and its important place in the debate over the 'neo-classical divide' — a debate that continues to influence classical work today. The lecture will be followed by a reception and the Greek and Roman galleries of the museum will be open for viewing.

On October 20, Steve Mouzon will deliver a lecture exploring how sustainability is more than "Gizmo Green" and how concepts such as durability, flexibility, and frugality can be more sustainable than the latest technologies.

For more information on Texas Chapter events please contact Holly McBrearty at (210) 824-7703 or holly@michaelgimber.com.

Members

The Institute is grateful to all members whose generosity ensures the success of our mission to advance the practice and appreciation of the classical tradition in architecture, urbanism, and the allied arts. We are pleased to recognize our Sustainer level members and above as of September 1, 2009.

PROFESSIONAL MEMBERS

LATROBE SOCIETY
Dell Mitchell Architects, Inc.

BENEFACTOR CIRCLE
Larry E. Boerder Architects

PATRON

Allan Greenberg, Architects
Alvin Holm AIA Architects
Andrew V. Giambertone & Assoc. Architects, PC
Balmer Architectural Mouldings
Bulley & Andrews LLC
Chadsworth's 1-800-COLUMNS
Dalglish Construction Company
David Phoenix
Decorators Supply Corp.
Drake Design Associates
Duany Plater-Zyberk & Company, LLC
Eric J. Smith Architect, P.C.
Eric Stengel Architecture
Eric Watson Architect, P.A.
Ervin, Lovett, & Miller, Inc.
Exclusive Cultural Travel Programs
Fairfax & Sammons Architects, PC
Ferguson & Shamamian Architects, LLP
FZAD Architecture + Design P.C.
G. P. Schafer Architect, PLLC
Giannetti Architecture & Interiors, Inc.
Hottenroth & Joseph Architects
Ike Kligerman Barkley Architects
Insidesign Inc.
James Doyle Design Associates LLC
Les Metalliers Champenois (USA)
London Boone, Inc./ Mimi London, Inc.
M. Deane Johnson, Inc.
Mayfair Construction Group LLC
Merritt Woodwork
Katherine Pasternack
Peter Pennoyer Architects
Project Solutions, LLC
R. D. Rice Construction, Inc.
Robert A. M. Stern Architects, LLP
Robinson Iron Corporation
SBD Kitchens, LLC
Seaside Community Development Corp.
Sebastian Construction Group
Symm Group Limited
TJS Partners Inc.
White River Hardwoods
William Hefner Architecture, Inc.
Zeluck Doors & Windows
Zepa Industries

DONOR

Appleton & Associates, Inc.
Authentic Provence, Inc.
BAMO, Inc.
Barbara Tattersfield Designs, Inc.
Biglin Architectural Group
Lisa Singleton Boudiette
Brian O'Keefe Architect, P.C.
Cacomma Interiors
Campbell Design Associates Inc.
Charles Warren, Architect
Charlotte Moss Interior Design
Connor Homes
Cowtan and Tout
DSI Entertainment Systems
Fokine Construction Services
Fondation de Coubertin
The Green-Wood Cemetery
Hilton-VanderHorn Architects
Historical Arts & Casting
J. P. Hall Architect, PC
James F. Carter Architect
Jeff Allen Landscape Architecture
JMS Design Associates
John B. Murray Architect, LLC
KAA Design Group, Inc.
Ken Tate Architect, P.A.
LaPolla Painting and Designs Studio, Inc.
Laura Blanco Interiors
Laura Casale Architect
Margolis Inc.
Mark P. Finlay Architects, AIA
McCoy Construction
Merrill, Pastor and Colgan Architects
Michael G. Imber, Architects
Michael Middleton Dwyer, Architect
Neil Hauck Architects LLC
Page Duke Landscape Architects
Reclamation Lumber
Restore Media, LLC
Richard Skinner & Associates, PL
Saint Jacques Artisans Workshops
Scofield Historic Lighting
Soho Construction Group, Inc.
Thomas M. Kirchhoff Architect, AIA, P.A.
Tucker & Marks
University of Notre Dame
Urban Design Associates
Vintage Millworks, Inc.
William R. Eubanks Interior Design, Inc.
Womack Interiors

SUSTAINER
A Classical Studio, Inc.
Aedicule Fine Framemaking
Agrell Architectural Carving, Ltd.
AJ.T Architect PC

Alexandros C. Samaras & Associates SA
Alisberg Parker Architects LLC
Andre Junget Illustration
Angela Free Design, Inc.
Antonia Hutt & Associates, Inc.
Archer & Buchanan Architecture, Ltd.
Athalie Derse, Inc.
Austin Patterson Disston Architects, LLC
The Beehive Foundation
Berndsen Company, Inc.
Bisazza USA, North America
Minor L. Bishop
BKSK Architects LLP
Brockschmidt & Coleman, LLC
Brothers' Custom Windows & Doors
BSF Properties, Inc.
Budd Woodwork Inc.
C2 Limited Design Associates
Cannon Design
Carolina Design Group
Carolina Residential Design
Carpenter & MacNeille, Architects & Builders, Inc.
Catalano Architects
Chesney's
The Classical Arts Studio
Clawson Architects LLC
Commercial Design Group - California Office
Cooper, Robertson & Partners
Core Home, Inc.
Cove Construction
Cronk Duch Architecture
H. Beck Crothers
Cullman & Kravis, Inc.
Cumberland Architectural Millwork, Inc.
Curtis and Windham Architects Inc.
D. Stanley Dixon Architect, Inc.
The D. H. Ellison Co.
Daron Builta, Inc.
David Desmond, Inc.
David Jones Architects
Design Built Consulting Inc.
DiBiase Filkoff Architects
Don B. McDonald Architect AIA Ltd.
Donald W. Powers Architects, Inc.
Donald Whittaker - The Design Guy Team
Dorosinski Campbell Design Associates, Inc.
Douglas Durkin Design, Inc.
Duncan McRoberts Associates
E. Frank Smith Residential Design, Inc.
E. M. Rose Builders Inc.
Eberlein Design Consultants Ltd

Ecocentrix, Inc.
Ekman Design Studio, Inc.
Elleco Construction
EverGreene Architectural Arts, Inc.
F. H. Perry Builder, Inc.
F. L. Bissinger, Inc.
Fire Rock Products, LLC
The Florentine Craftsmen
Flower Construction
Foutz Construction
Fusch Architects, Inc.
G. Morris Steinbraker & Son, Inc.
Geoffrey Mouen Architects
Georgina Rice & Co., Inc.
Gillian C. Rose Interior Design, LLC
Gleysteen Design, LLC
Gold Coast Metal Works, Inc.
Golenberg & Company Construction
Graham Landscape Architecture, Inc.
The Grand Prospect Hall
Graphic Builders, Inc.
Gregory Lombardi Design, Inc.
Griffiths Constructions, Inc.
Group 3 Architecture-Interiors-Planning
Haifa General
Hammersmith Studios
Hammond Beeby Rupert Ainge, Inc.
Harrison Design Associates
Hartman-Cox Architects
Heaven N Earth
Henry H. Lewis Contractors, LLC
Historical Concepts
Horizon Builders, Inc.
Horizon Houseworks
Housing Trends, Inc.
Hubert Whitlock Builders, Inc.
Hull Historical Inc.
International Fine Art Conservation Studios, Inc.
Jack Arnold
Jacquelynne P. Lanham Designs, Inc.
Jamb
James Leslie Design Associates Corp
Jane Antonacci Interior Design
JD Group, Inc.
Jean Larette Interior Design
Jeffrey Preuss
Johanna's Design Studio
John Blatteau Associates
Jonathan Browning Studios, Inc.
Jonathan Lee Architects
Joseph Minton, Inc.
Kaplan Gehring McCarroll Architectural Lighting

Kass & Associates
Kate Johns, AIA
Kensington & Associates
Kirk Stathes Architect, Inc.
KL Megla LLC
KM Designs, Inc.
KMNelson Design
Knight Architecture LLC
L. M. Silkworth Architect P.A.
Lambert Landscape Company
Land Plus Associates, Ltd.
The Lane Group, Inc.
Lane - McCook & Associates, Inc.
Lantern Masters
Leeds Custom Design
Leonard Metal Art Works, Inc.
Leta Austin Foster & Associates, Inc.
Loop Worx
The Lotus Collection
Ludowici Roof Tile
Lundy Flitter Beldecos & Berger, P.C.
Lynn Beavers & Associates
Madison Cox Design Inc.
Madison Spencer Architects
Robert C. Magrish
Mary Follin Design
McCrery Architects, LLC
Melinda Ritz Interiors
Merrimack Design Associates
Meyer Architecture
MG Partners
Michael Goldman Architect, P.C.
Michael Matrkka, Inc.
Michael Whaley Interiors, Inc.
Millworks by Design
Millworks, Etc.
Mitchell Studio LLC
Moberg Fireplaces, Inc.
Molly Isaksen Interiors, Inc.
Morales-Kessee Design Associates
Nancy Boszhardt Inc.
Nanz Custom Hardware
NCG Architects
John R. Neal
Ned Forrest Architects
Neumann Lewis Buchanan Architects
New World Home, LLC
NHM Interiors
North Pacific
Oak Grove Restoration Company
Offenhauser Associates, Inc.
Old World Stone Ltd.
Orleans Realty, LLC
P. S. Kennedy-Grant Architect
Pak Heydt & Associates
Parc Monceau Fine Antiques & Accessories
Paskevich & Associates Architects
Patricia Benner Landscape Design, Inc.
Pavé Tile & Stone, Inc.
Penelope Francis & Co
Peninsula Custom Homes
Perry Guillot, Inc.
Peter Block & Associates Architects, Inc.
Peter Zimmerman Architects Inc.
Pineapple House Interior Design
Plath & Company, Inc.
Portera Antique Spanish Doors
Preservation Foundation of Palm Beach
Pyramid Builders
R G Architects, LLC

R. S. Granoff Architects P.C.
Randall A. Ridless, LLC
Randall Architects, Inc.
Real Illusions Inc.
Rebecca Bradley Interior Design
Remains Lighting
Restoration Timber, LLC
Revival Construction, Inc.
Richard Holz, Inc.
Robert Dean Architects
Robert Frear Architects, Inc.
Robert S. Bennett Architect
Robin Bell Design, Inc.
Ruby Architects, Inc
Ryall Porter Architects
Ryan Associates - New York Office
Ryan Associates - San Francisco Office
Sater Group, Inc.
Shannon Hall Designs
Shears & Window
Sheldon Richard Kostelecky Architect
Shelley Morris Interior Design, Ltd.
Shostak Style Inc.
Sloan Architects, PC
SM Architects, Inc.
Smith Ekblad & Associates
Spitzmiller & Norris, Inc.
Sroka Design, Inc.
Stancil Studios
Studio for Civil Architecture, PLLC
Studio H Home Couture
Susan Lustik Inc.
Suzanne B. Allen & Company Design, LLC
Tanglewood Conservatories
The Taylor & Taylor Partnership
Taylor Development
Thomas Gordon Smith Architects
Thomas Jayne Studio
Thomas Norman Rajkovich Architect, Ltd.
Thomas Riley Artisans' Guild
Timothy Bryant Architect
Todd Alexander Romano
Tony Quinn Masonry
Town & Country Conservatories
TR Building and Remodeling Inc
Traditional Architecture, Inc.
Traditional Cut Stone, Ltd.
Vigini Paint and Decorating, Inc.
Vigneau & Associates Interior Design
Villa Savoia, Inc.
Village Homes
Vitoch Interiors Ltd.
Von Morris Corporation
Walter B. Melvin Architects, LLC
Weaver Design Group
Webster & Company, Ltd.
Wendy Posard & Associates
Westye Group Southeast
William B. Litchfield Residential Design, Inc.
William H. Childs, Jr. & Associates
Wilson Kelsey Design, Inc.
Zivkovic Connolly Architects P.C.

GENERAL MEMBERS
BENEFACTOR CIRCLE

Suzanne and Ric Kayne
Jane Cheever Powell
Seth Joseph Weine

PATRON

Martha and James Alexander
Tim Barber
Kevin P. A. Broderick
Suzanne Clary
M. Lily Datta
Sharon Saul and Christopher Davis
David H. Ellison
Jorge Lóyzaga
Anne Girard Mann
Nancy Brown Negley
Paige Rense
James R. Utaski

DONOR

Betsy Allen
Mary M. Ballard
Constance Goodyear Baron
Paul Beirne
Marifé Hernández and Joel Bell
Shelley G. Belling
Michael C. Booth
John Cameron
Edward Lee Cave
James F. Cooper
David Dowler
Ronald Lee Fleming
Christopher Forbes
Emily T. Frick
Todd Furgason
Edmund Hollander
Richard L. Kramer
Michael Lykoudis
Paula Nataf
David Orentreich
Randy Ratcliff
Alan J. Rogers
Stephen Salny
Anita Sweeney
Linda Stabler-Talty and Peter J. Talty
Richard Trimble
Stephanie Walden

SUSTAINER

Emerson Adams
Eleanor Alger
Debra Antolino
Catherine Cahill and William Bernhard
Morrison Brown
Robin Browne
Valerie Carney
Chris Carson
John Clark
Gary L. Cole
Sherwood Cox
Andrew Cullinan
Scott Reed Dakin
Eric Inman Daum
Diana Davenport
Angelo Davila
Ron de Salvo
Timothy Deal
Nancy M. Dedman
Seth Faler
Mary Campbell Gallagher
JD, PhD

Mark J. Gasper
David H. Gleason
Gwynne Gloege
Peter Louis Guidetti
Jas Gundry
Kahlil Hamady
Stephen Harby
Thomas S. Hayes
Frederick H. Herpel
Helga Horner
John Jamail
Evelyn and Michael Jefcoat
David Karabell
Jeff Kaufman
Richard Kossmann
Scott R. Layne
Catesby Leigh
Alan P. Levenstein
David Lewandowski
J. Carson Looney
Calder Loth
Sandra Mabritto
Robert MacLeod
Steven Markey
Helen Marx
Victoria McCluggage
Mark W. McClure
John P. McGrath
Richard D. Miller
Chas A. Miller
William L. Mincey
Susan C. Morse
Paula Moss
Stephanie Murray
Nancy Newcomb
Suzanne Rabil
Lawrence H. Randolph
Paul Stuart Rankin
Stanley D. and Elizabeth Scott
Harold R. Simmons
P. Allen Smith
L. Caesar Stair
Jack Taylor
Richard John Torres
Robert N. Wakefield
Gail Whelan
John H. Whitworth
Nalla Wollen
David Michael Wood
Douglas C. Wright
Molly Wythes
John Yunis
Fred S. Zrinscak

Please visit www.classicist.org for a comprehensive membership roster.

ICA&CA Calendar Of Events

BALMER ARCHITECTURAL MOULDINGS

is the lead sponsor for fall 2009 programming.

Programs in New York City are supported, in part, by public funds from the New York City Department of Cultural Affairs in partnership with the New York City Council.

DISCOVER CLASSICAL NEW YORK: EDWIN HOWLAND BLASHFIELD'S "THE GRADUATE" AND THE CAMPUS OF THE CITY COLLEGE OF NEW YORK

FRIDAY, SEPTEMBER 25; 4:00 PM

Author and historian Mina Rieur Weiner begins this tour with a viewing of Edwin Howland Blashfield's masterpiece, "The Graduate" (1907–08), located in the Great Hall on the campus of City College. The excursion continues with an architectural walking tour of Shepard Hall — the neo-Gothic building designed by George Browne Post — and the College's Hamilton Heights neighborhood. Peter Gisolfi and Marta Gutman will lead the walking tour, which includes a discussion of Post's original campus plan. Mr. Gisolfi is an architect/landscape architect as well as



SHEPARD HALL, CITY COLLEGE OF NEW YORK, CONVENT AVENUE, NEW YORK CITY, NEW YORK.

Professor and Chairman of the Spitzer School of Architecture at the College. Dr. Gutman, historian and licensed architect, teaches architectural and urban history at the Spitzer School of Architecture.

Meet at The Great Hall located in Shepard Hall, Convent Avenue and 140th Street, at 3:45 pm sharp. RSVP required (212) 730-9646, ext. 109 or online at www.classicist.org.

COST/LEARNING UNITS: FREE to ICA&CA members and employees of professional member firms. This is a special members only event. 1.5 AIA/CES LU (Theory); to register for credit, contact Leah Aron, Education Programs Coordinator, at la@classicist.org.

Sponsored by EverGreene Architectural Arts, Inc. PANEL DISCUSSION WITH MINA RIEUR WEINER: EDWIN HOWLAND BLASHFIELD: MASTER AMERICAN MURALIST

WEDNESDAY, SEPTEMBER 30; RECEPTION AT 6:30 PM; LECTURE AT 7:00 PM

Mina Rieur Weiner, historian and editor of *Edwin Howland Blashfield: Master American Muralist* (W.W. Norton, 2009), will moderate a panel of the book's contributors who together present new scholarship on the esteemed muralist, Edwin Howland Blashfield.

The publication is the most recent title in the "Classical America Series in Art and Architecture." To celebrate this important book, Blashfield scholar Anne E. Samuel, conservator Gillian Britta Randell, and the current president of the National Society of Mural Painters, Jeff Greene will join Mina to place the artist in a historical context, interpret major works, and discuss Blashfield's influence on public art and mural painting. Also present on the panel will be noted photographer, Anne Day, who provided the book's lavish new images.

Library at the General Society 20 West 44th Street, 6:30 pm reception and book signing; lecture to follow at 7:00 pm. RSVP required (212) 730-9646, ext. 109 or online at www.classicist.org.

COST/LEARNING UNITS: FREE to ICA&CA members and employees of professional member firms; \$10 for the general public. 1 AIA/CES LU (Theory); to register for credit, contact Leah Aron, Education Programs Coordinator, at la@classicist.org.



FALL INTENSIVE: A PROFESSIONAL INTENSIVE PROGRAM IN CLASSICAL ARCHITECTURE

FRIDAY, OCTOBER 2 – SATURDAY, OCTOBER 10

This weeklong, full-time intensive satisfies the core course requirements for the ICA&CA Certificate in Classical Architecture. Participants hone their drawing skills and render and design with the elements of the classical vocabulary as well as absorb the basic theoretical tenets. For a detailed course description and application, visit www.classicist.org.

.....

This program is co-partnered by Sir John Soane's Museum Foundation

LECTURE WITH MICHAEL C. KATHRENS: NEWPORT VILLAS: THE REVIVAL STYLES 1885 – 1935

THURSDAY, OCTOBER 8; RECEPTION AT 6:30 PM; LECTURE AT 7:00 PM

Join author and architectural historian, Michael C. Kathrens, for an enlightening description of the architectural and social development of Newport, the nexus of wealth and fashion at the end of the 19th century. To accommodate their entertaining in "cottages" that ranged from thirty to seventy rooms, Newport's elite engaged the country's most accomplished architects. This period is the subject of Mr. Kathren's new book *Newport Villas: The Revival Styles 1885 – 1935* (W.W. Norton, January 2009). ICA&CA members will remember Mr. Kathrens from his previous book, *The Great Houses of New York* as well as from his walking tours.



MARBLE HOUSE, NEWPORT, RHODE ISLAND

Library at the General Society, 20 West 44th Street, 6:30 pm reception and book signing; lecture to follow at 7:00 pm. RSVP required (212) 730-9646, ext. 109 or register online at www.classicist.org.

COST/LEARNING UNITS: FREE to ICA&CA members and employees of professional member firms; \$10 for the general public. 1 AIA/CES LU (Theory); to register for credit, contact Leah Aron, Education Programs Coordinator, at la@classicist.org.

OPEN HOUSE NEW YORK: VISIT THE GENERAL SOCIETY OF MECHANICS AND TRADESMEN, ICA&CA, AND THE GRAND CENTRAL ACADEMY OF ART

SATURDAY, OCTOBER 10; 1:00 – 5:00 PM

PLASTER CAST VIEWING, 1:00 – 5:00 PM
GCA STUDIO VISIT, 1:15 PM
LECTURE AND BOOK SIGNING, 2:00 PM

The ICA&CA will participate in the 7th Annual Open House New York Weekend. The Institute's Historic Plaster Casts Center will be open for self-guided tours and a studio visit of the Grand Central Academy's Plaster Cast Drawing Class will be offered. Constance Rosenblum, longtime New York Times editor and reporter, will discuss her book *Boulevard of Dreams: Heady Times, Heartbreak and Hope Along the Grand Concourse in the Bronx* (August 2009, NYU Press). Sam Roberts, urban affairs correspondent of the Times and author of *A Kind of Genius* and *The Brother* will introduce Ms. Rosenblum. The book, whose publication coincides with the Boulevard's centennial, traces the history of a legendary street, home to America's greatest trove of Art Deco apartment houses and an unequaled example of turn-of-the-century urban design. Its story is the quintessential story of the American city.

All events take place at the General Society, 20 West 44th Street. Historic Plaster Casts Center, Suite 310; Grand Central Academy studio demonstration, Suite 610; Lecture and Book signing at the Library located on the first floor. Visit www.obny.org for more information and a complete listing of city-wide events.

COST: FREE for the general public; registration is required for the studio tour and lecture.

.....

Sponsored by Flower Construction

LECTURE WITH PETER PENNOYER AND ANNE WALKER: THE ARCHITECTURE OF GROSVENOR ATTERBURY

FRIDAY, OCTOBER 16; RECEPTION AT 6:30 PM; LECTURE AT 7:00 PM

During the building boom of the late-19th and early-20th centuries, architects could barely keep pace with the demand. Grosvenor Atterbury (1869 – 1956) became known as one of the most influential architects, town planners, and inven-

tors of this period. Join Peter Pennoyer and Anne Walker, coauthors of *The Architecture of Grosvenor Atterbury* (W.W. Norton, 2009), for a talk about Atterbury's unique contributions ranging from city houses, country clubs, and civic buildings, to town planning and affordable housing, to innovations in materials and technology.

Library at the General Society, 20 West 44th Street, 6:30 pm reception and book signing; lecture to follow at 7:00 pm. RSVP required (212) 730-9646, ext. 109 or register online at www.classicist.org.

COST/LEARNING UNITS: *FREE* to ICA&CA members and employees of professional member firms; \$10 for the general public. 1 AIA/CES LU (Theory); to register for credit, contact Leah Aron, Education Programs Coordinator, at la@classicist.org.

.....

TRADITIONAL BUILDING EXHIBITION AND CONFERENCE (TBEC)

BALTIMORE CONVENTION CENTER,
BALTIMORE, MD
WEDNESDAY, OCTOBER 21 –
SATURDAY, OCTOBER 24

This fall, at the Baltimore Convention Center, TBEC will offer the largest, most comprehensive learning and networking event for professionals and enthusiasts involved in historic restoration, rehabilitation, and traditional building. Join your peers: architects, building owners, facilities managers, general contractors, custom builders, restoration/renovation specialists, tradespeople, planners, developers, interior designers, landscape architects, and suppliers for seminars, workshops, architectural tours, craftsmanship demonstrations and unique product exhibitions. Earn 24 Continuing Education Credits. ICA&CA's Mid-Atlantic Chapter members will be on hand as well as ICA&CA instructors Brent Hull, Martin Brandwein, Sarah Blank, and David Neumann. For more information and to register visit www.traditionalbuildingshow.com or call Carolyn Walsh, (781) 779-1560.

.....

MANUAL SKILLS: INTRODUCTION TO LINEAR PERSPECTIVE

ONE ALL-DAY SESSION: SATURDAY,
OCTOBER 24; 10:00 AM – 6:00 PM

This course is an introduction to linear perspective, which is the intellectual basis for representational thought and spatial illusionism. The principal perspective system studied is based on Leonardo's model as well as that of 18th-century Englishman, Brook Taylor, and of 19th-century



THE SCHOOL OF ATHENS BY RAPHAEL.

American, Thomas Eakins. The phenomenon of camera-conditioned thought, which includes camera obscura and photography, and its relationship to linear perspective, will also be investigated. At the end of the course students will have completed several diagrams covering one- and two-point perspective.

Register at www.classicist.org or contact Leah Aron, Education Programs Coordinator, at la@classicist.org.

INSTRUCTOR: Patrick Connors, Fine Artist; Instructor: Grand Central Academy of Art

COST/LEARNING UNITS: \$200 (\$180 for ICA&CA members); 7 AIA/CES LUs (Manual Skills)

.....

Sponsored by Peter Pennoyer Architects

LECTURE WITH ULYSSES GRANT DIETZ AND SAM WATTERS: DREAM HOUSE: THE WHITE HOUSE AS AN AMERICAN HOME

WEDNESDAY, OCTOBER 28; RECEPTION
AT 6:30 PM; LECTURE AT 7:00 PM

Before it became a public monument with a residential suite, the White House was a home. From George Washington's Anglo-American country house to the post-war suburban world of Truman and Eisenhower, Ulysses Grant Dietz and Sam Watters will cover the White House interiors and gardens as presidents and first ladies changed them in response to American ideals of domestic design.

Ulysses Grant Dietz, a great-great-grandson of President Ulysses S. Grant, is a leading authority on American decorative arts and Sam Watters is



an independent scholar of writing on the culture of American houses and gardens before 1940. Their new book on the subject of the White House is published by Acanthus Press and will be available at the lecture.

Library at the General Society, 20 West 44th Street, 6:30 pm reception and book signing; lecture to follow at 7:00 pm. RSVP required (212) 730-9646, ext. 109 or register online at www.classicist.org.

COST/LEARNING UNITS: *FREE* to ICA&CA members and employees of professional member firms; \$10 for the general public. 1 AIA/CES LU (Theory); to register for credit, contact Leah Aron, Education Programs Coordinator, at la@classicist.org.

.....

DISCOVER CLASSICAL NEW YORK: VISIT THE HARKNESS HOUSE

ONE EAST 75TH STREET AT THE
CORNER OF FIFTH AVENUE
SATURDAY, OCTOBER 31; 10:30 AM
& 1:00 PM

A perennial favorite of ICA&CA members, the ICA&CA offers two tours, both guided by Paul Wentworth Engel, architectural designer and preservationist. The Harkness House, home of Edward and Mary Harkness, was designed by James Gamble Rogers between 1906 and 1908 in the style of a restrained Italian palazzo. Virtually unchanged since 1908, the interiors include French and Italian Renaissance rooms organized around a unique floor plan influenced by an unusual corner lot. One of few family-owned houses of its period, it is maintained impeccably by the Harkness family's foundation, The Commonwealth Fund, to whom the house was bequeathed in 1952.

Participants will meet in front of Harkness House at 10:15 am for the earlier tour; 12:45 pm for the later tour. Each tour will last approximately one hour. Space is limited. RSVP required (212) 730-9646, ext. 109 or register online at www.classicist.org.

COST/LEARNING UNITS: *FREE* for Members of the ICA&CA and employees of professional member firms; \$20 for the general public. 1 AIA/CES LU (Theory); to register for credit, contact Leah Aron, Education Programs Coordinator, at la@classicist.org.

DISCOVER CLASSICAL NEW YORK: LIVING ARTISTRY AND DEAD ARCHITECTS AT WOODLAWN ON ALL SAINTS DAY

WEBSTER AVE & EAST 233RD STREET,
BRONX, NY
SUNDAY, NOVEMBER 1; 1:00 – 2:30 PM

Join ICA&CA member and architect, Charles D. Warren, and Susan Olsen, of Friends of The Woodlawn Cemetery, for a special walking tour on All Saints Day. The Cemetery's 400 acres contain the finest collection of early-20th-century funerary art and architecture in the United States. There are mausoleums and monuments designed by Sir Edwin Lutyens, McKim Mead and White, John Russell Pope, Carrère and Hastings, Warren and Wetmore, Hunt and Hunt, James Gamble



LOOKING EAST FROM JEROME AVENUE AT THE WESTERN GATE OF WOODLAWN CEMETERY, BRONX.

Rogers, and many, many others. The cemetery features landscapes by the Olmsted Brothers, Beatrix Jones Farrand, and Ellen Biddle Shipman; sculpture by Daniel Chester French, Paul Bartlett, and Alexander Archipenko; and a remarkable collection of decorative arts. Woodlawn is the final resting place of many eminent artists and architects including C.P.H. Gilbert, George B. Post, Samuel Trowbridge, George Heins, Edwin Howland Blashfield, and the Piccirilli family. The tour will include mausoleums featuring stained glass by Louis Comfort Tiffany, Maitland Armstrong, and John LaFarge; metal work by Samuel Yellin; Guastavino tile vaults; and more — some of these interiors have never been open to the public.

Participants will meet at the Cemetery's Webster Avenue office for the 90-minute tour at 1:45 pm. Space is limited. RSVP required (212) 730-9646, ext. 109 or register online at www.classicist.org.

COST/LEARNING UNITS: \$10 for Members of the ICA&CA and employees of professional member firms; \$20 for the general public. 1.5 AIA/CES LUs (Theory); to register for credit, contact Leah Aron, Education Programs Coordinator, at la@classicist.org.

THEORY: GARDENS AND THE CLASSICAL TRADITION: ITALY, ENGLAND, AND AMERICA

TUESDAYS, NOVEMBER 3, 10, & 17;
2:00 – 3:30 PM

The ICA&CA, in partnership with The Burden Center, will present its popular Visual Literacy course on three consecutive Tuesday afternoons this fall. As with the arts of painting, sculpture, and architecture, the classical tradition has played an important role in the history of western garden



THE MEDICI VILLA PETRAIA, BY NICCOLÒ TRIBOLO, EPI TOMIZES THE ITALIAN GARDEN OF THE EARLY RENAISSANCE.

and landscape design. This course will explore how classical ideals came to be expressed and evolved in the garden design traditions of Italy, England, and America, as well as following the evolution of garden and landscape design from the Renaissance to the Picturesque tradition. Lectures will be followed by group discussions and supplemented with optional reading assignments.

Register at www.classicist.org or call (212) 730-9646, ext 109.

INSTRUCTOR: Johanna Bauman, Ph.D.

COST/LEARNING UNITS: \$90 (\$65 for ICA&CA and Burden Center members). 4.5 AIA/CES LUs (Theory); to register for credits, please contact Leah Aron, Education Programs Coordinator, at la@classicist.org.

PRACTICE: BASIC GEOMETRICAL PROPORTIONING IN PRACTICE AND APPLICATION

ONE ALL-DAY SESSION: SATURDAY,
NOVEMBER 7; 10:00 AM – 6:00 PM

Proportion is the most crucial, yet most misunderstood aspect of architectural design. It exists today as the last bastion of objective logic in the realm of aesthetics. Indeed, without an understanding of proportion and the closely related problem of scale, no architectural endeavor can be successful in the aesthetic sense. This course will present practical methods of geometrically describing the elements of classical architecture and how they relate to an overall architectural composition, as well as provide techniques and practice for applying proportion to design with special emphasis on the orders.

Register at www.classicist.org or contact Leah Aron, Education Programs Coordinator, at la@classicist.org.

INSTRUCTOR: Richard Sammons, Architect

COST/LEARNING UNITS: \$200 (\$180 members); 7 HSW AIA/CES LUs (Practice)

LATROBE SOCIETY EVENT PRIVATE TOUR OF NEW-YORK HISTORICAL SOCIETY'S MCKIM MEAD AND WHITE ARCHITECTURAL DRAWINGS

THURSDAY, NOVEMBER 12, AT 5:00 PM

Dr. Marilyn S. Kushner, Curator and Head, Department of Prints, Photographs and Architectural Collections, leads a private tour of the New-York Historical Society's McKim Mead and White Architectural Drawings collection. Between 1880 and 1910, the firm undertook hundreds of commissions, including New York's Pennsylvania Station, the University of Virginia, Metropolitan Museum of Art, the Morgan Library, the New York City Municipal Building, the Columbia University Morningside Heights campus, the Boston Public Library, the Milwaukee County Courthouse, the West Wing of the White House, and the Minneapolis Institute of Art. Select samples of the Society's archives — comprised of nearly 300 linear feet of drawings, pieces of correspondence, and miscellaneous records — will be on view. Please note that this event is only open to Latrobe Society Members.

The Latrobe Society recognizes members and friends who demonstrate their profound commitment to advancing the practice and appreciation of the classical tradition by making an annual contribution of \$5,000 or more. To learn more about the program, please contact Sara Durkacs, Director of Membership at (212) 730-9646, ext. 106 or at sd@classicist.org.

THEORY: UNDERSTANDING THE LANGUAGE OF CLASSICISM

ONE SATURDAY SESSION: SATURDAY,
NOVEMBER 14; 10:00 AM – 4:00 PM

This course offers an in-depth but accessible understanding of the basics of classical architecture. It is designed to help students grasp the vocabulary, syntax, and grammar of the classical language. Using numerous examples from traditional architecture, students will learn to “read” buildings in the classical style and to understand why these buildings look the way they do. The course aims to enable students not only to better appreciate their surroundings but to create more informed new works in the classical tradition. Basic Architectural Literacy is delivered in a four-lecture format. Topics include the language of classical architecture, Greek classicism, motifs, and connoisseurship.

Register at www.classicist.org or contact Leah Aron, Education Programs Coordinator, at la@classicist.org.

INSTRUCTOR: Calder Loth, Senior Architectural Historian, Virginia Department of Historic Resources

COST/LEARNING UNITS: \$200 (\$180 for ICA&CA members); 5 AIA/CES LUs (Theory)

This program is co-partnered by The Beaux Arts Alliance ILLUSTRATED LECTURE WITH MITCHELL OWENS

MONDAY, NOVEMBER 16; 6:30 PM
LECTURE; RECEPTION IMMEDIATELY
FOLLOWING

Mitchell Owens, an editor-at-large for *Elle Décor*, is the author of *In House*, which features interiors shot by celebrated British photographer, Derry Moore. He is currently working on a book about the American-born 1960s tastemaker Pauline de Rothschild. In his lecture, Mr. Owens will cover a number of grand residences associated with the renowned banking family, including their astonishing country house, Ferrières, and their palace on the isle St. Louis.

The Church of the Resurrection, 115 East 74th Street, between Park and Lexington Avenues. RSVP required (212) 730-9646, ext. 109 or register online at www.classicist.org.

COST: \$30 for ICA&CA members and employees of professional member firms; \$35 for the general public

DISCOVER CLASSICAL NEW YORK GRACIE MANSION TEA & TOUR WITH JAMIE DRAKE

THURSDAY, NOVEMBER 19 AT 1:00 PM

Called “home” by mayors and merchants for more than 200 years, Gracie Mansion is now used largely for ceremonial functions and is among the oldest structures in Manhattan. Enjoy a private tour with interior designer and author Jamie Drake followed by tea service in the grand ballroom.

Gracie Mansion, East End Avenue at 88th Street. RSVP required (212) 730-9646, ext. 109 or register online at www.classicist.org.

COST/LEARNING UNITS: \$30 for ICA&CA members and employees of professional member firms. *This is a members only event.* 1 AIA/CES LU (Theory); to register for credits, please contact Leah Aron, Education Programs Coordinator, at la@classicist.org.



GRACIE MANSION, WATERFRONT FAÇADE.

Sponsored by James Doyle Design Associates

LECTURE WITH JUDITH TANKARD BEATRIX FARRAND: PRIVATE GARDENS, PUBLIC LANDSCAPES

MONDAY, NOVEMBER 23; RECEPTION AT
6:30 PM; LECTURE AT 7:00 PM

Judith B. Tankard is a landscape historian and the author of six books on historic gardens and garden designers, most recently, *Beatrix Farrand: Private Gardens, Public Landscapes* (Monacelli Press, 2009). In her talk she traces the life and work of one of the foremost landscape architects of the early 1900s. Born into a prominent New York family (she was the niece of Edith Wharton), Beatrix Farrand eschewed the traditional social life of the Gilded Age to pursue her passion for landscape design and plants. Many of her clients were members of high society with estates in Newport, the Berkshires, Maine, and on Long Island, but ultimately Farrand became a consultant for university campuses, including Yale and Princeton, and for public gardens, including the Santa Barbara Botanic Garden and The New York Botanical Garden. Perhaps her best-known work is the extensive grounds at Dumbarton Oaks, originally a private residence and now a research institute for Harvard University.

Library at the General Society, 20 West 44th Street, 6:30 pm reception and book signing; lecture to follow at 7:00 pm. RSVP required (212) 730-9646, ext. 109 or register online at www.classicist.org.

COST/LEARNING UNITS: FREE to ICA&CA members and employees of professional member firms; \$10 for the general public. 1 AIA/CES LU (Theory); to register for credit, contact Leah Aron, Education Programs Coordinator, at la@classicist.org.

Sponsored by Taconic Builders, Inc.

ICA&CA HOLIDAY COCKTAIL PARTY AND BENEFIT AUCTION

SATURDAY, DECEMBER 5; 6:00 – 8:00 PM
THE RACQUET AND TENNIS CLUB,
370 PARK AVENUE, NYC

Jacket and tie required for men; equivalent for ladies.

Once again, the bi-annual Holiday Cocktail Party and Benefit Auction will feature one-of-a-kind objects and artworks specially curated by Co-Chairs Michael Simon and Maureen Footer and donated by ICA&CA members and friends. Reserve your tickets online at www.classicist.org.

PLAN AHEAD FOR 2010

Sponsor to be announced

**LECTURE WITH MAGGIE LIDZ
THE DU PONT'S: HOUSES AND
GARDENS IN THE BRANDYWINE,
1900 – 1951**

**WEDNESDAY, JANUARY 27; RECEPTION
AT 6:30 PM; LECTURE AT 7:00 PM**

No American family has dominated the industrial and residential architecture of a state longer than the du Ponts of Delaware. The fortunes amassed from the DuPont Company allowed the family to pursue many passions, resulting in the exquisite art collections, botanical gardens, and libraries now enjoyed by the American public. Winterthur Estate historian, Maggie Lidz, will give a virtual tour of the du Pont family houses and farms, including the celebrated Winterthur, Longwood, and Nemours estates as well as some unexpected surprises: Bellevue, a replica of James Madison's Montpelier; Eleutherian Mills, the 19th-century "partnership" house overlooking the Brandywine Creek, and Hod House, the "Hodgson" system prefabricated residence built as a summer retreat on 550 acres.

Library at the General Society, 20 West 44th Street, 6:30 pm reception and book signing; lecture to follow at 7:00 pm. RSVP required (212) 730-9646, ext. 109 or register online at www.classicist.org.

COST/LEARNING UNITS: *FREE to ICA&CA members and employees of professional member firms; \$20 for the general public. 1.5 AIA/CES LUs (Theory); to register for credit, contact Leah Aron, Education Programs Coordinator, at la@classicist.org.*

ARCHITECTURAL & VISUAL LITERACY

DATE TO BE ANNOUNCED

The spring 2010 edition of this course will be presented by Professor Mosette Broderick, Director of the Architecture and Urban Design Program at New York University's Dept. of Fine Arts. For details as they are announced please visit www.classicist.org.



**DESIGN DRAWING OF THE MONUMENTAL PLASTER
ORNAMENTATION FOR THOMAS AQUINAS COLLEGE'S OUR
LADY OF THE MOST HOLY TRINITY CHAPEL.** *Courtesy of
EverGreene Architectural Arts, Inc.*

DISCOVER CLASSICAL NEW YORK: BEHIND-THE-SCENES STUDIO TOUR EVERGREENE ARCHITECTURAL ARTS, INC.

**THURSDAY, FEBRUARY 25, 2010;
RECEPTION AT 6:30 PM, TOUR AT
7:00 PM**

Tour the design and mural studio where EverGreene Architectural Arts is actively engaged in preserving the classical tradition of art and architectural ornament. See how EverGreene employs expert craftsmanship and state of the art technology to produce award-winning historic and traditional interiors in churches, theaters, lobbies and state capitols across the country.

Evergreene's New York Office, 450 West 31st Street, 7th Floor. RSVP required (212) 730-9646, ext. 109 or register online at www.classicist.org.

COST/LEARNING UNITS: *FREE to ICA&CA members and employees of professional member firms. This is a members only event. 1 IA/CES LU (Theory); to register for credit, contact Leah Aron, Education Programs Coordinator, at la@classicist.org.*

SAVE THE DATE ARTHUR ROSS AWARDS

MONDAY, MAY 3, 2010

The twenty-ninth annual Arthur Ross Awards honoring excellence in the classical tradition will be held at the University Club in New York City. For details as they are announced, visit www.classicist.org.

Latrobe Society

NAMED FOR BENJAMIN HENRY LATROBE, the Society honors members and donors whose contributions constitute a substantial part of our ability to further the work and the mission of the ICA&CA around the country.

A champion of the Greek Revival style, the British-born Latrobe was the first fully trained architect to work and teach in America. Among his works are the United States Capitol and the Baltimore Basilica, the first Roman Catholic cathedral in America and perhaps Latrobe's finest monument. It was recently restored to its classical magnificence.

Marshall G. Allan
Marc Appleton and Joanna Kerns
Naja Armstrong
Norman D. Askins
F. Ronald Balmer
Joe Boehm
Christopher H. Browne
Rhett Butler
Richard Cameron
Richard A. Clegg
Jacob Collins
Jeffrey L. Davis
Antoinette Denisof
Richard H. Driehaus
Anne Fairfax and Richard Sammons
Mark Ferguson
Maureen W. Footer
Mr. and Mrs. George J. Gillespie III
Ray Gindroz
Gwynne Gloege
Jim Hanley
William Harrison
Amanda Haynes-Dale
Kathryn Herman
Charles Heydt
Michael G. Imber

Deirdre E. Lawrence and Clem Labine

Tom Maciag

Dell Mitchell

John Murray

Yong Pak

Greg Palmer

Katie Ridder and Peter Pennoyer

Elizabeth Plater-Zyberk

Foster Reeve

Suzanne Rheinstein

R. Douglass Rice

Jaquelin Robertson

Janet Ross

Alfred Ross

Barbara Sallick

Suzanne and David Santry

Gilbert P. Schafer III

Oscar Shamamian

Michael Simon

Andrew Skurman

Eric Smith

Nick Stern

Todd Strickland

James Sykes

Aso Tavitian

Suzanne Tucker and Timothy Marks

D. Clay Ulmer

Jean Wiat

Bunny Williams and John Rosselli

Roy Zeluck

Charlotte Triefus and Lloyd P. Zuckerberg

List as of August 1, 2009

The Latrobe Society recognizes members and friends who demonstrate their profound commitment to advancing the practice and appreciation of the classical tradition in architecture and the allied arts by making an annual contribution of \$5,000 or more. Through their generosity, these individuals help sustain a solid foundation for the Institute. Members enjoy all the Institute has to offer, plus unique benefits and events created exclusively for the Society. Latrobe Society members receive two complimentary tickets to our annual Arthur Ross Awards gala recognizing excellence in the classical tradition. If you are interested in becoming a Latrobe Society Member, or to learn more about the program, please contact Sara Durkacs, Director of Membership at (212) 730-9646, ext. 106 or at sd@classicist.org.

Special Thanks

THE INSTITUTE THANKS THE GENEROUS donors whose recent contributions and grants are making our programs possible today.

Special appreciation is again extended to the Arthur Ross Foundation and the late Arthur Ross for the creation of a reserve fund, a permanent endowment, and precious operating support on a number of vital fronts. Support from the Morris and Alma Schapiro Fund has allowed creation of the Alma Schapiro Prize as a permanently endowed bi-annual affiliated fellowship at the American Academy in Rome for an American fine artist. The Fund has also been at the creative forefront of the Grand Central Academy of Art.

A Classical Studio

Appleton & Associates Architects Inc.

Andrew Skurman Architects

Andrew V. Giambertone and Associates, Architects PC

Balmer Architectural Mouldings

Bloomberg LLP.

Bulgin & Associates, Inc

Cooper, Robertson & Partners

Chadsworth's 1.800.Columns.

DC Williamson General Contractor, Inc.

The Decorators Supply Corp.

Duany Plater-Zyberk & Company, LLC.

Dyad Communications *design office*

Exquisite Surfaces

Fairfax & Sammons Architects, PC

Ferguson & Shamamian Architects

Foster Reeve Associates

Gewalt Hamilton Associates, Inc

G. P. Schafer Architect, PLLC

Harrison Design Associates

Historical Concepts

Historical Trends Corp.

Horizon Builders, Inc.

Housing Trends, Inc.

The I. Grace Company

James Doyle Design Associates, LLC

John B. Murray Architect, LLC

Kean Williams Giambertone

Knight Architecture, LLC

Lellyett & Rogers Company

Les Metalliers Champenois

McCoy Construction

Michael G. Imber, Architects

Millworks, Etc

Pak Heydt & Associates

P. E. Guerin

Peter Cosola, Inc

Peter Pennoyer Architects

Reilly Woodworks

Restore Media, LLC

Richard Holz, Inc.

R. D. Rice Construction

SDB Kitchens

Sebastian Construction Group

SPJ Lighting, Inc.,

Robert A. M. Stern Architects

Scofield Historic Lighting

Taconic Builders

Thomas Callaway Associates

Tucker & Marks

Urban Design Associates

Uberto Construction

Venus Marble

Waterworks

Zeluck, Inc.

Zepa Industries

Zivkovic Connolly Architects

.....
The Athens Committee of the Chicago Sister Cities
International Program

The Beehive Foundation

The Clinton Family Fund

Gilbert & Ildiko Butler Foundation

Cowles Charitable Trust

Richard H. Driehaus Charitable Lead Trust

Elisha-Bolton Foundation

Furthermore: A Program of the J.M. Kaplan Fund

Florence Gould Foundation

GE Foundation

The William and Mary Greve Foundation

Kathryn M. and Ronald J. Herman Jr. Charitable

Foundation

Hettinger Foundation

Robert Lehman Foundation

Leon Levy Foundation

Newington-Cropsey Foundation

New York City Department of Cultural Affairs

New York Council for the Humanities

One West 54th Street Foundation

Orville Gordon Browne Foundation

Leslie T. Posey and Frances U. Posey Foundation

Sonia Raiziss Giop Charitable Foundation

Alfred and Jane Ross Foundation, Inc.

Arthur Ross Foundation, Inc.

The Morris and Alma Schapiro Fund

Eugene V. & Clare Thaw Charitable Trust

Mrs. Giles Whiting Foundation

Roy J. Zuckerberg Family Foundation

List as of July 31, 2009

All programs are supported, in part, by public funds from the New York City Department of Cultural Affairs, in partnership with the City Council.

And from **New York Council for the Humanities**



THE FORUM

The Newsletter of the
Institute of Classical Architecture & Classical America

.....
Editor: Henrika Taylor

Contributors: Leah Aron, Sara Durkas,
Paul Gunther, Justine Kalb, Clem Labine, Jessica Ouwerkerk,
Lauren Salm, and Jeremy Welsh

Design: Dyad Communications *design office*

The Forum is published twice annually; Spring/Summer and Fall.
All letters and inquiries should be addressed
to the ICA&CA or by calling (212) 730-9646, ext. 102.

On the cover: "Law in Modern Times"
by Edwin Howland Blashfield, 1910. Pendentive, Mahoning County
Courthouse, Youngstown, Ohio. *Photograph by Anne Day.*

.....
BECOME A MEMBER OF THE ICA&CA
MEMBERSHIP ~ SCHOLARSHIP ~ FELLOWSHIP
Visit www.classicist.org to learn more.

**BOARD OF
DIRECTORS**

Marshall Allan
Marc Appleton
Gary Brewer
Christopher H. Browne
Nir Buras
Richard Wilson Cameron
Adele Chatfield-Taylor
Jacob Collins
Jeffrey L. Davis
Richard H. Driehaus
Anne Fairfax
Mark Ferguson
Christine G. H. Franck
Ray Gindroz, FAIA
William H. Harrison
Kathryn Herman
John Massengale
Peter H. Miller
Peter Penmoyer
Elizabeth Plater-Zyberk, FAIA
Alfred Ross
Barbara Sallick
Suzanne R. Santry
Gilbert P. Schafer III, AIA
Greg Shue
Suzanne Tucker
Russell Windham
Roy S. Zeluck

DIRECTORS EMERITI

David J. Cohen
Rodney Mims Cook, Jr.
Philip K. Howard
Clem Labine
Robert Pirie
Thomas J. Salvatore
Bunny Williams

STAFF

Randy Acosta
Leah Aron
Sara Durkas
Paul Gunther
Justine Kalb
Jessica Ouwerkerk
Destiny Pierce
Henry Hope Reed
Henrika Taylor

INTERNS

Ivan Gilkes
Natalie Kurzyrna

VOLUNTEERS

Agatha Chen
Richard D'Atrile
Jeremy Welsh
Ivy Yuan

FELLOWS

Steve Bass
William H. Bates III
Martin Brandwein, AIA
William Brockschmidt
Daron Buita
Kathleen Casanta
Stephen T. Chrisman
Courtney Coleman
Brian Connolly
Jeffrey P. Hall
John Woodrow Kelley
Anthony McConnell
Thomas J. McManus
Michael Mesko
David Rinehart
Gregory Shue
Seth Joseph Weine

CHAPTER

PRESIDENTS

CHARLESTON
Ralph Muldrow
CHARLOTTE
Charles Furman McLarty
CHICAGO & ILLINOIS
Christopher Derrick

FLORIDA

Clifford G. Duch

MID-ATLANTIC

David Neumann

NEW ENGLAND

John P. Margolis

NORTHERN CALIFORNIA

Suzanne Tucker

OHIO AND ERIE

David H. Ellison

PHILADELPHIA

Barbara Eberlein

ROCKY MOUNTAIN

Don Ruggles

SOUTHEAST

Elizabeth Dowling

SOUTHERN CALIFORNIA

Erik Evens

TENNESSEE

Brent Baldwin

TEXAS

Michael Imber

COUNCIL OF

ADVISORS

Robert Adam
Michael Bierut
John Blatteau
Louis Boffarding
Gary Brewer
Alexander Creswell

Stefania de Kennessey
Elizabeth Dowling

Andrés Duany
David Anthony Easton
Nancy W. Green

Allan Greenberg

Mac Griswold

Inge Heckel

Eve M. Kahn

George M. Kelly, Sc.

Léon Krier

Calder Loth

Susan Lustik

Michael Lykoudis

Myron Magnet

Arthur May

Sarah Medford

Hugh Petter

Carlos A. Picón

Demetri Porphyrios

Foster Reeve

Dick Reid

Jaquelin Robertson

Witold Rybczynski

Richard F. Sammons

Edward Schmidt

Thomas Gordon Smith

Robert A.M. Stern

Peter Trippi

Simon Verity

A. Russell Versaci

Darren Walker

Eric Watson

Carroll William Westfall

Jean Wiart



INSTITUTE OF
**CLASSICAL ARCHITECTURE
& CLASSICAL AMERICA**

20 WEST 44TH STREET, SUITE 310, NEW YORK NY 10036-6603
WWW.CLASSICIST.ORG

Presorted
Standard
U.S. Postage
PAID
Permit No. 58
Jenkintown, PA