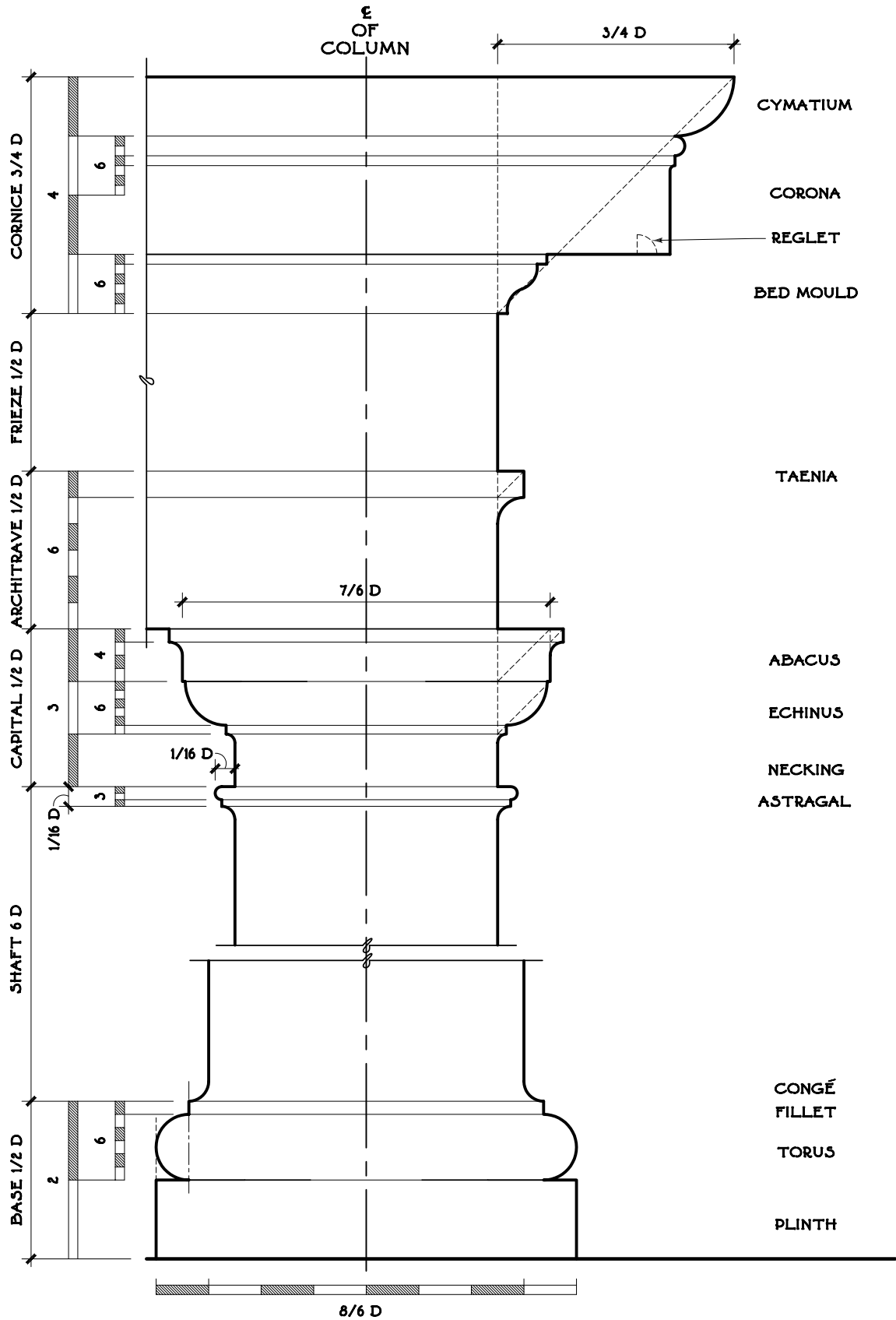


$$\frac{12.75}{7D} = \frac{1}{4} = \text{RATIO OF ENTABLATURE TO COLUMN}$$

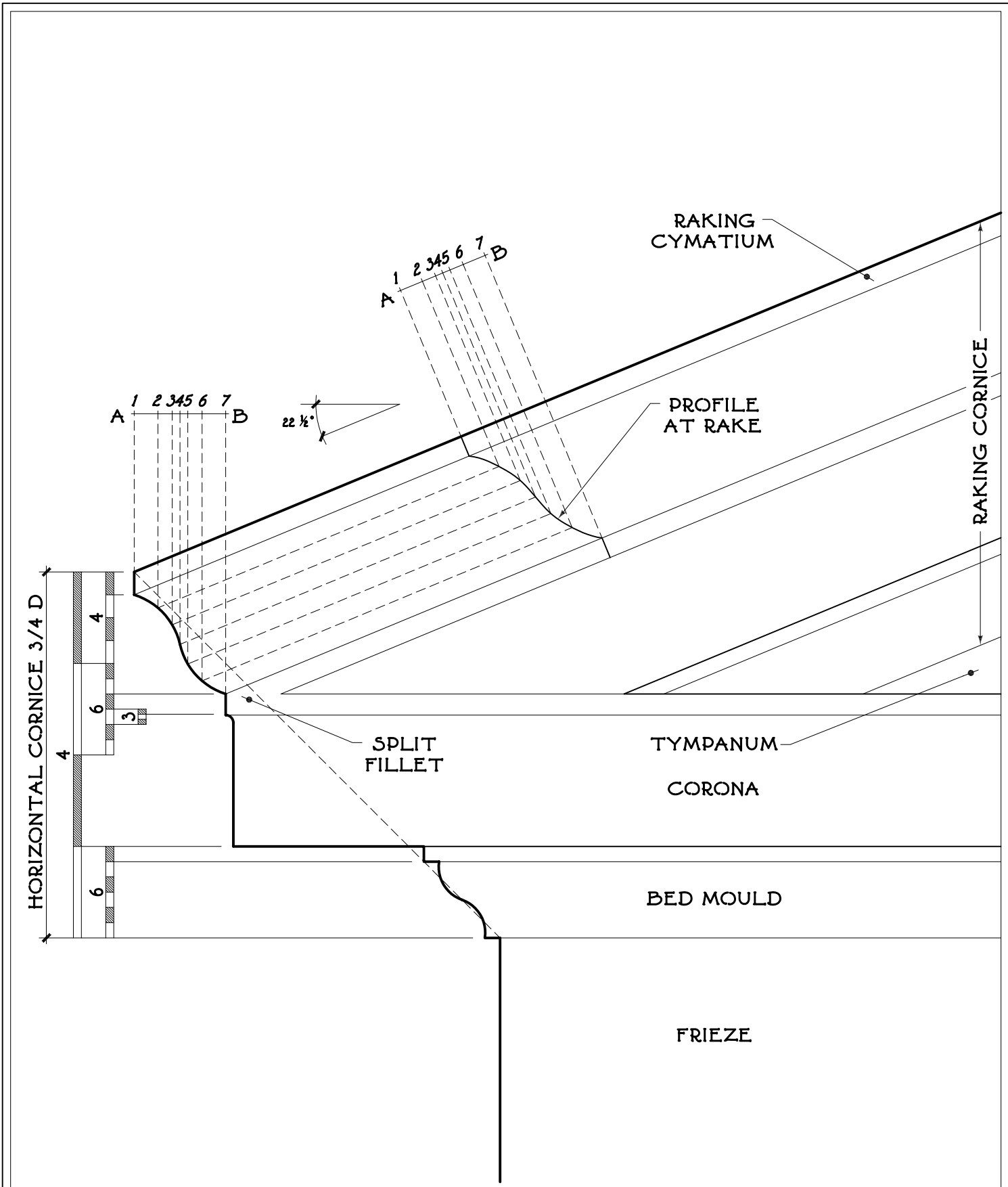
1 D = 1 DIAMETER OF COLUMN

LAYOUT OF THE TUSCAN ORDER



THE TUSCAN ORDER

CLASSICAL PRIMER



THE TUSCAN PEDIMENT

CLASSICAL PRIMER